

WALTER & HERBERT

MADE IN ENGLAND

1946

FROM THE BEGINNING

In September 1946, two young entrepreneurs partnered to create Optoplast Manufacturing Company Limited.

In the 40 years that followed, Walter Conway and Herbert Thorn enjoyed great success as they developed technology such as the PIMO machine, an innovation that would shape the way spectacles were manufactured worldwide.

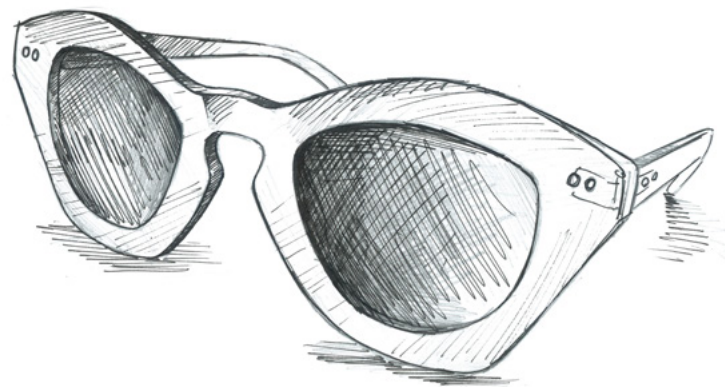
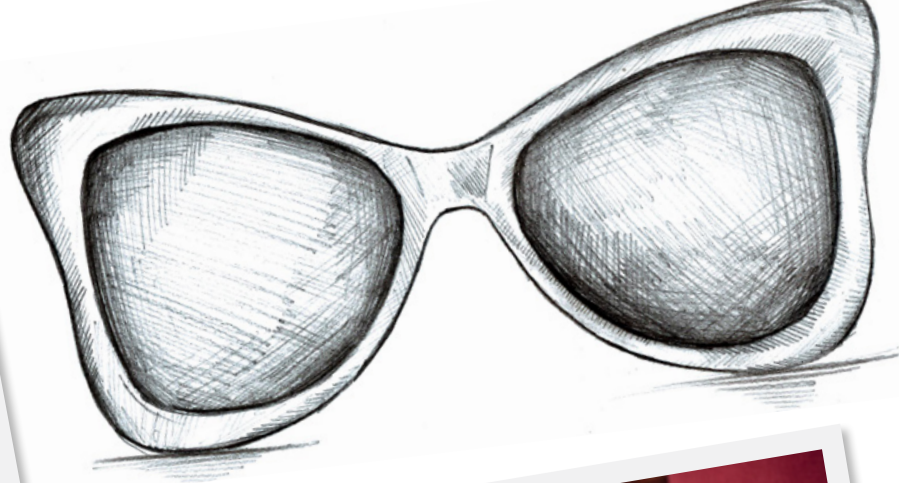
Today, James Conway and Daniel Thorn are continuing this legacy. Using seven decades of industry experience, they have created their own collection of frames using materials and techniques that would make Walter and Herbert proud.



DESIGNED WITH LOVE

Our design team have lovingly developed a striking collection of frames using a combination of classic techniques and modern technologies. Every frame boasts striking colour combinations of the best globally sourced acetates.

Smooth contours reminiscent of shapes from the 1940's make the frames irresistibly tactile.





MANUFACTURED WITH CARE

Each frame is skilfully crafted in our factory in England by specialist technicians who ensure every frame is worthy of the Walter & Herbert stamp.

The frames are thoroughly tested in our own UKAS accredited laboratory to certify that each frame not only looks and feels beautiful, but exceeds the British Standards of quality, performance and safety.



OUR TIMELINE

1946

Walter Conway and Herbert Thorn moved to the quintessentially English town of Guildford in Surrey, where they established the headquarters for Optoplast Manufacturing Co. Ltd. With an initial staff of 6, surrounded by rolling hills and cobbled streets, this small team of workers were soon to make a name for themselves within the optical industry



1948

Walter & Herbert worked closely with the National Health scheme to launch the first range of optical frames for the NHS, whilst Walter began work on the PIMO machine.

1951

The PIMO machine was launched and put into production, inserting metal reinforcements into acetate spectacle sides with absolute precision an innovation that changed the way spectacles were manufactured worldwide. With 80 staff at work, Walter and Herbert were able to produce two temples a second, exporting more than five million a year to 11 countries.



1967

Walter and Herbert's flourishing business relocated to a new, larger factory in Surbiton, spanning over 10,000 square feet on the outskirts of Surrey.

1982

At the age of 32, Walter's eldest son Gary joined the company. Like his father, Gary's charm and aptitude helped to negotiate new opportunities for the business. Over the next year Optoplast became the largest producer of spectacle frame sides in England.



1985

Following Herbert's retirement, his son Daniel joined the company.

1992

The business relocated to Liverpool and set up manufacturing in Manchester. Gary and Daniel were appointed Joint Chief Executives.

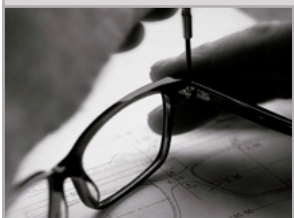
This was a milestone in the history of Walter and Herbert as the company was now in the hands of the second generation Conways and Thorns.



OUR TIMELINE

1999

Gary's son James joined the company. 21 years old and fresh from university he quickly demonstrated his father's entrepreneurial spirit and a passion for optics.



2006

A new design office opened in Weybridge, just 30 minutes from central London.

2012

Newly appointed Joint Chief Executives James and Daniel set up Optolab, a UKAS accredited testing lab that gave the company unique competitive advantage ensuring the quality, performance and safety of every frame they produced.



2014

The first production machines arrived allowing Optoplast to make beautiful eyewear in Liverpool, England.

2015

Walter & Herbert, made in England eyewear is launched signifying an exciting new chapter for the company. Deeply engrained in heritage, the brand benefits from three generations of industry expertise. Paying homage to Walter Conway and Herbert Thorn, Walter & Herbert frames deliver a versatile range of styles that are beautifully designed and crafted in England.



2018

Since the launch in 2015, Walter & Herbert eyewear has grown in popularity with the UK independent market and can now be found in many opticians from Glasgow to Plymouth and beyond.

To promote the brand further, we've designed and installed over 70 bespoke window displays across the UK.

2019

Walter & Herbert is now distributed worldwide throughout Europe, Asia, Africa, Australia, Central and South America.





POINT OF SALE & MERCHANDISE



POINT OF SALE



PHOTO FRAME WITH STRUT BACK

W 20cm x H 26.5cm x D 2cm

Order code: WHPHOTOKIT



3-PIECE DISPLAY

W 24cm x H 29cm x D 12cm

Order code: WHSTAND002



SKINNY BANNER

W 50cm x H 150cm

Order code: WHBAN03



HANDHELD MIRROR

Order code: WHMIRROR



DISPENSING TRAY

W 35cm x H 3cm x D 20cm

Order code: WHTRAY



LOGO BLOCK WITH INSERT

W 14.5cm x H 2.5cm x D 7.5cm

Order code: WHBLOCKKIT



POINT OF SALE

BAG - SMALL

Order code: WHBAGSML



PACKAGING SET

Order code: WHBOX/05



MICROFIBER GLOVES

Order code: WH/GLOVE



A5 BROCHURE

Order code: WHA5B02



A4 BROCHURE

Order code: WHA401



PIN BADGE

W 2cm x H 1.1cm x D 1cm

Order code: WHBADGE



BOWLER HAT

Order code: WHHAT01



ACETATE STAND

Order code: WHACRY01



STOCKIST PLAQUE

W 15cm x H 7.5cm x D 0.5cm

Order code: WHPLA01



WINDOW DISPLAY EXAMPLES

We support our stockists with the design
and materials needed to create unique
window displays.



EVENT DISPLAY EXAMPLES

We often exhibit at the optical shows around the world and we've also held afternoon tea parties to train staff about the brand and products.



CELEBRITY & BLOGGER ENDORSEMENTS

Dr James Greenwood



Kat @doesmybumlook40



Kelly Hoppen



Sam Rockwell



Naomi Iksted



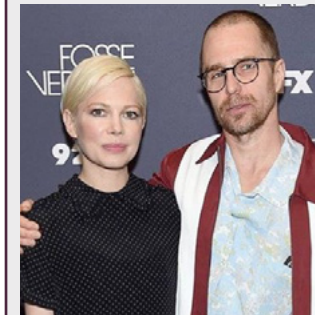
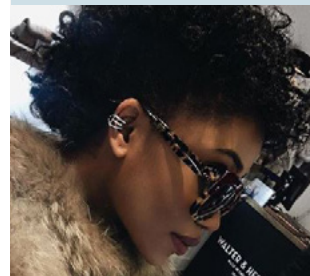
Charlotte de Carle



Siu @myglassesandme



@serrabellum





THE MADE IN ENGLAND COLLECTION

WALTER & HERBERT
MADE IN ENGLAND
1946



ASTELL

This stylish and elegant frame complements the natural grooves of the brow line and lifts the eye for a sophisticated look. The four colourways each combine unique hues that convey a clean and attractive style.

SIZE:

53mm - 17mm - 140mm
Also available in Asian Fit

NAMESAKE:

Mary Astell, writer

COLLECTION:

Ladies Optical



C1 - PEARL SHADOW
WHAST1



C2 - BLUSHED TORT
WHAST2



C3 - SMOKED SCARLET
WHAST3



C4 - ELDERBERRY WHISKEY
WHAST4

AUSTEN

The chic combination of acetate and etched metal gives this round eye frame a trendy and easy-to-wear charm. The natural warm colours offer simplicity and style.

SIZE:

49mm - 19mm - 140mm

NAMESAKE:

Jane Austen, writer

COLLECTION:

Ladies Optical



C1 - BLAKE SLATE
WHAUS1



C2 - CRIMSON FLAME
WHAUS2



C3 - PINK CHAMPAGNE
WHAUS3



BELL - NEW!

Bell is a classic rounded square frame in three easy to wear colours - C1 in Golden Topaz offers the wearer a vibrant tortoiseshell, C2 in Raspberry wows with it's vibrant hue and C3 is a classic, yet stylish Black Slate.

SIZE:

49mm - 16mm - 140mm

NAMESAKE:

Vanessa Bell, Painter & Designer

COLLECTION:

Ladies Optical



C1 - GOLDEN TOPAZ
WHBELO1



C2 - RASPBERRY
WHBELO2



C3 - BLACK SLATE
WHBELO3

BLACKWELL

A soft rectangular frame with etched metal temples. Blackwell comes in three enticing colourways; Crimson Flame, Burnt Caramel and Midnight Teal.

SIZE:

51mm - 16mm - 140mm

NAMESAKE:

Elizabeth Blackwell, Physician

COLLECTION:

Ladies Optical



C1 - CRIMSON FLAME
WHBLA1



C2 - BURNT CARAMEL
WHBLA2



C3 - MIDNIGHT TEAL
WHBLA3



BRONTE

Feminine and classy, Bronte is a traditional and sophisticated style. Whilst they appear to be contemporary and stylistically subtle, the frames uniquely complement most face types.

SIZE:

51mm - 18mm - 135mm
Also available in Asian Fit

NAMESAKE:

Emily Bronte, writer

COLLECTION:

Ladies Optical



C1 - ELDERBERRY WHISKEY
WHBRON1



C2 - GOLDEN MARBLEWOOD
WHBRON2



C3 - JET ROUGE
WHBRON3

BROOKE

Brooke's flattering cat eye shape helps to promote the glamorous feel that this frame already exuberates. The clean and refined style delivers a stylish, classic look whilst remaining relevant to modern taste.

SIZE:

55mm - 14mm - 135mm
Also available in Asian Fit

NAMESAKE:

Jocelyn Brooke, writer

COLLECTION:

Ladies Optical



C1 - BURNT MAPLE
WHBRO1



C2 - MEDIUM ORCHID
WHBRO2



C3 - SLATE GREY
WHBRO3



BRUNEL

Brunel is distinguishably bold, square and smart. It has a refined look that is supported by the smooth, well-polished metallic grey and black colourways.

SIZE:

54mm - 16mm - 140mm
Also available in Asian Fit

NAMESAKE:

Isambard Kingdom Brunel, engineer

COLLECTION:

Gentlemen's Optical



C1 - NAVY HAZE
WHBRU1



C2 - GREY SMOKE
WHBRU2



C3 - BLACK SLATE
WHBRU3

BYRON

A suave and refined frame, Byron delivers a larger, yet equally stylish version of the Kipling frame. With larger features designed to suit larger face shapes, Byron exudes elegance and timeless sophistication.

SIZE:

56mm - 17mm - 140mm
Also available in Asian Fit

NAMESAKE:

Lord Byron, poet

COLLECTION:

Gentlemen's Optical



C1 - OLIVE ROSEWOOD
WHBYR1



C2 - RUSSET SPRUCE
WHBYR2



C3 - ARCTIC MIDNIGHT
WHBYR3



CHURCHILL

Churchill is a modern take on a retro style. The enticing colourways on this frame help to deliver a strong, confident statement, reminiscent of timeless classics.

SIZE:

49mm - 21mm - 140mm
Also available in Asian Fit

NAMESAKE: Winston Churchill, former British Prime Minister

COLLECTION:

Unisex Optical



C1 - GOLDEN TOPAZ
WHCHU1



C2 - BLACK SLATE
WHCHU2



C3 - CHAMPAGNE MARBLEWOOD
WHCHU3



C4 - GREY SMOKE
WHCHU4

COOK - NEW!

Cook is a square frame with pin detailing on the edges and a keyhole bridge - a popular feature in the Made in England collection. Cook's colour choices are inspired by nature offering Black Slate (C1), Flaming Ember (C2) or Olive Dusk (C3). A quirky choice for any wearer.

SIZE:

49mm - 20mm - 145mm

NAMESAKE:

James Cook, Explorer

COLLECTION:

Gentlemen's Optical



C1 - BLACK SLATE
WHC0001



C2 - FLAMING EMBER
WHC0002



C3 - OLIVE DUSK
WHC0003



COWLEY

An amplified take on the popular round eye, Cowley adds a bold, contemporary statement to any look.

SIZE:

44mm - 23mm - 145mm
Also available in Asian Fit

NAMESAKE:

Abraham Cowley, poet

COLLECTION:

Gentlemen's Optical



C1 - MIDNIGHT EMBER
WHCOW1



C2 - FLAMING EMBER
WHCOW2



C3 - VEILED SAPPHIRE
WHCOW3

DAVISON

Davison is an angular round eye frame in opaque acetate with etched metal temples. Rounded in shape, this unique and elegant frame adds a stylish statement to your wardrobe.

SIZE:

49mm - 18mm - 145mm

NAMESAKE:

Emily Davison, suffragette

COLLECTION:

Ladies Optical



C1 - PROSECCO BLUSH
WHDV1



C2 - ROYAL PACIFIC
WHDV2



C3 - SEA BREEZE
WHDV3



DEFOE

A refreshing combination of acetate fronts and tips with etched metal temples. Defoe offers three colours - a striking yet classic black, a warm opaque olive and a best-selling opaque blue.

SIZE:

52mm - 16mm - 140mm

NAMESAKE:

Daniel Defoe, Writer

COLLECTION:

Gentleman's Optical



C1 - BLACK SLATE
WHDEF1



C2 - OLIVE DUSK
WHDEF2



C3 - ROYAL PACIFIC
WHDEF3

DICKENS

Cool, clean and classy. Dickens is undeniably stylish. The square, bold frame features subtle details that promote the uncomplicated, masculine style of the frame.

SIZE:

53mm - 17mm - 140mm
Also available in Asian Fit

NAMESAKE:

Charles Dickens, author

COLLECTION:

Gentlemen's Optical



C1 - TUSCAN OAK
WHDIC1



C2 - LAVENDER CRYSTAL
WHDIC2



C3 - BLACK SLATE
WHDIC3



ELGAR

A simple and classic style frame to suit most face shapes with two tone quirky temples to add a touch of individuality.

SIZE:

48mm - 19mm - 145mm
Also available in Asian Fit

NAMESAKE:

Edward Elgar, composer

COLLECTION:

Unisex Optical



C1 - MIDNIGHT SAPPHIRE
WHELG1



C2 - BLACK SLATE
WHELG2



C3 - BURNT EMBER
WHELG3



C4 - ARCTIC MIDNIGHT
WHELG4

FLEMING

Fleming is a bigger frame suited to those with larger face shapes. Nonetheless, Fleming maintains the confident and retro look of the Churchill whilst providing a larger bridge which is perfect for wider face profiles.

SIZE:

51mm - 22mm - 140mm
Also available in Asian Fit

NAMESAKE:

Ian Fleming, author

COLLECTION:

Unisex Optical



C1 - GOLDEN TOPAZ
WHFLE1



C2 - BLACK SLATE
WHFLE2



C3 - CHAMPAGNE MARBLEWOOD
WHFLE3



C4 - GREY SMOKE
WHFLE4



GLANVILLE

Glanville, a petite frame available in a mixture of unique, but subtle colours, with a laminated brow-line. Easy-to-wear, this model is sophisticated and stylish, offering an everyday look.

SIZE:

49mm - 18mm - 140mm

NAMESAKE:

Eleanor Glanville, English Entomologist

COLLECTION:

Ladies Optical



C1 - MIDNIGHT EMBER
WHGLA01



C2 - CRIMSON TORT
WHGLA02



C3 - BLACK SLATE
WHGLA03

HANDEL

Featuring a modern combination of metal and acetate, Handel boasts an 80's fashion vintage feel. The quirky double bridge adds character creating a timeless, unisex frame.

SIZE:

51mm - 21mm - 145mm

NAMESAKE:

George Frideric Handel, composer

COLLECTION:

Unisex Optical



C1 - SEPIA MARBLEWOOD
WHHAN1



C2 - STORM GREY
WHHAN2



C3 - GOLDEN TORT
WHHAN3



HEPWORTH

A soft rectangular frame with two-tone detailing in warm autumn hues. The simple colours and shape ensure Hepworth is easy to wear and works with many face shapes.

SIZE:

53mm - 15mm - 140mm
Also available in Asian Fit

NAMESAKE:

Barbara Hepworth, artist

COLLECTION:

Ladies Optical



C1 - MIDNIGHT EMBER
WHHEPW1



C2 - SCARLET EMBER
WHHEPW2



C3 - AUTUMN VIOLET
WHHEPW3

HOGARTH

A gallant style with alluring angles, Hogarth combines the classic appeal of a round eye with exaggerated end pieces for a unique retro look. Very charismatic this style is for those who like to turn heads.

SIZE:

51mm - 21mm - 145mm
Also available in Asian Fit

NAMESAKE:

William Hogarth, painter

COLLECTION:

Unisex Optical



C1 - CHERRY EMBER
WHHOG1



C2 - MIDNIGHT EMBER
WHHOG2



C3 - LAVENDER CRYSTAL
WHHOG3



HUXLEY

A retro style with a refined, modern feel. Huxley is a slimmer design in four unique colour ways that exemplifies Walter & Herbert's style.

SIZE:

47mm - 21mm - 145mm
Also available in Asian Fit

NAMESAKE:

Aldous Huxley, writer

COLLECTION:

Unisex Optical



C1 - FLAMING EMBER
WHHUX1



C2 - PINOT BLUSH
WHHUX2



C3 - ROYAL PACIFIC
WHHUX3



C4 - CHAMPAGNE MARBLEWOOD
WHHUX4



C5 - BLACK SLATE*
WHHUX5
*Not in Asian Fit

KIPLING

Simple and clean, the modestly stylish Kipling has a distinctive blend of two complementary colours that further highlights the frames aesthetic. Two neat metal pins on the front and sides give a classic retro finish.

SIZE:

54mm - 17mm - 140mm
Also available in Asian Fit

NAMESAKE:

Rudyard Kipling, writer & poet

COLLECTION:

Gentlemen's Optical



C1 - OLIVE ROSEWOOD
WHKIP1



C2 - RUSSET SPRUCE
WHKIP2



C3 - ARCTIC MIDNIGHT
WHKIP3



LEWIS

Smooth lines contrast with the rectangular shape for a refined look. Lewis's keyhole bridge adds a hint of character while the Arctic blue acetate keeps this style contemporary.

SIZE:

53mm - 21mm - 145mm
Also available in Asian Fit

NAMESAKE:

C.S.Lewis, writer

COLLECTION:

Gentlemen's Optical



C1 - CHAMPAGNE MARBLEWOOD
WHLEW1



C2 - ARCTIC MIDNIGHT
WHLEW2



C3 - FLAMING EMBER
WHLEW3

LOWRY

A masculine club master frame that is reminiscent of classic, vintage style. The combination of acetate matched with metal rims lifts the frame and delivers a sophisticated and groomed style.

SIZE:

54mm - 19mm - 140mm

NAMESAKE:

L.S.Lowry, artist

COLLECTION:

Gentlemen's Optical



C1 - FLAMING EMBER
WHLOW1



C2 - GREY SMOKE
WHLOW2



C3 - BRUSHED SLATE
WHLOW3



MORRIS

A striking masculine frame, Morris is suited to those with larger face shapes. This modest style features a distinctive double bridge that adds a classic retro finish.

SIZE:

55mm - 15mm - 145mm

NAMESAKE:

William Morris, artist

COLLECTION:

Gentleman's Optical



C1 - SEPIA MARBLEWOOD
WHMOR1



C2 - STORM GREY
WHMOR2



C3 - GOLDEN TORT
WHMOR3

NASH

A vintage take on the iconic round eye, Nash exudes timeless sophistication. The combination of acetate and metal adds subtle detail to this otherwise understated frame.

SIZE:

49mm - 21mm - 145mm

NAMESAKE:

Paul Nash, artist

COLLECTION:

Unisex Optical



C1 - SEPIA MARBLEWOOD
WHNAS1



C2 - STORM GREY
WHNAS2



C3 - GOLDEN TORT
WHNAS3



ORWELL

Orwell is undoubtedly masculine. This rectangular shaped frame has an air of vintage boldness. Available in three variations, one of which is a stylish matte finish.

SIZE:

54mm - 16mm - 140mm
Also available in Asian Fit

NAMESAKE:

George Orwell, writer

COLLECTION:

Gentlemen's Optical



C1 - GOLDEN MARBLEWOOD
WHORW1



C2 - MIDNIGHT SAPPHIRE
WHORW2



C3 - RUSSET WALNUT
WHORW3

RUTHERFORD

A classic and delicately curved oversized frame with a modern combination of metal and acetate. Rutherford is available in Black Slate, Crimson Tort and Pinot Blush.

SIZE:

53mm - 18mm - 140mm

NAMESAKE:

Margaret Rutherford, actress

COLLECTION:

Ladies Optical



C1 - BLACK SLATE
WHRUT1



C2 - CRIMSON TORT
WHRUT2



C3 - PINOT BLUSH
WHRUT3



SIMMONS - NEW!

Simmons is a vintage treat! This modern take on a traditional cat-eye features three bold and stylish colour combinations - a vibrant Walnut acetate (C1), the romantic hues of Crystal Rouge (C2) and the jagged greys and vibrant blue of Charcoal Slate (C3).

SIZE:

51mm - 17mm - 140mm

NAMESAKE:

Jean Simmons, Actress

COLLECTION:

Ladies Optical



C1 - WALNUT
WHSIM01



C2 - CRYSTAL ROUGE
WHSIM02



C3 - CHARCOAL SLATE
WHSIM03

STUBBS

A retro style with a bold edge. Stubbs' strong square shape, is a playful take on a classic frame whilst bringing a touch of contemporary flare.

SIZE:

52mm - 18mm - 145mm
Also available in Asian Fit

NAMESAKE:

George Stubbs, artist

COLLECTION:

Gentlemen's Optical



C1 - MIDNIGHT EMBER*
WHSTUB1/A

*Only available in Asian Fit



C2 - ARCTIC CRYSTAL
WHSTUB2



C3 - FLAMING EMBER
WHSTUB3



TEALBY

A thin, rounded frame, bursting with colourful acetate all the way through to the end of it's metal temples. Tealby is quirky and eye-catching, with striking detail and a retro edge.

SIZE:

51mm - 18mm - 140mm

NAMESAKE:

Mary Tealby, Founder of Battersea Dogs Home, London

COLLECTION:

Ladies Optical



C1 - RUBY TORT
WHTEA01



C2 - MARBLED TURQUOISE
WHTEA02



C3 - MIDNIGHT EMBER
WHTEA03

WALLIS

A petite round eye with two tone temples. The keyhole bridge is comfortable to wear and adds a quirky touch to an otherwise understated frame.

SIZE:

46mm - 20mm - 145mm
Also available in Asian Fit

NAMESAKE:

Barnes Wallis, scientist & engineer

COLLECTION:

Unisex Optical



C1 - MIDNIGHT EMBER
WHWAL1



C2 - CHAMPAGNE MARBLEWOOD
WHWAL2



C3 - FLAMING EMBER*
WHWAL3/A
*Only available in Asian Fit



C4 - CRYSTALLINE TORT
WHWAL4



WODEHOUSE

A quirky double bridge frame with an ultra-modern combination of metal and acetate. Wodehouse features a distinctive keyhole bridge and etched temples of the Walter & Herbert branding.

SIZE:

49mm - 19mm - 145mm

NAMESAKE:

P.G.Wodehouse, writer

COLLECTION:

Unisex Optical



C1 - BLACK SLATE
WHWOD1

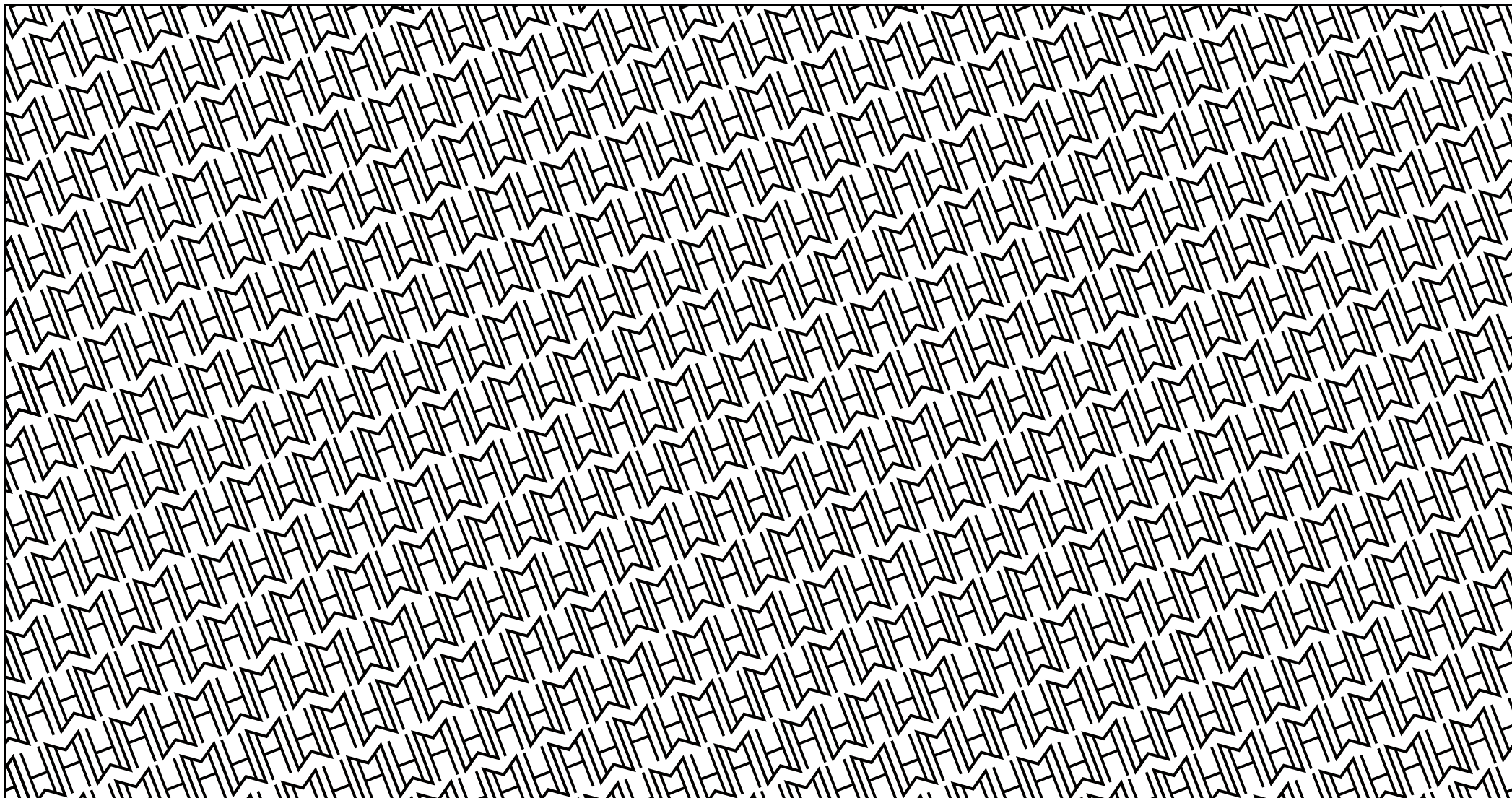


C2 - BURNT ORANGE
WHWOD2



C3 - NAVY HAZE
WHWOD3





THE LIMITED EDITION COLLECTION

WALTER & HERBERT
MADE IN ENGLAND
1946



ABOUT THE COLLECTION

Our design team have lovingly developed a beautiful Limited Edition Walter & Herbert collection.

In homage to our English heritage, we have named these frames after iconic stately homes in the South of England - Clandon Park, Hatchlands Park, Loseley Park and Polesden Lacey.

There are 100 pieces of each model available and are individually numbered on the temple tips. The frames features an etched design on the metal temples and a bold pattern on the inside. Created using beta titanium and Mazzucchelli acetate, the Limited Edition collection offers a premium, lightweight feel whilst exuding luxury.

Each frame is displayed in a black wooden box accompanied by a genuine leather keyring, also handmade in England, a large lens cloth, a booklet about the collection and a glossy black case.



LOSELEY

A refined and modern approach to the classic round-eye. Elegant in shape, the keyhole bridge makes this frame stylish and comfortable. Rich black acetate gives Loseley a stylish and sophisticated look.

SIZE:

51mm - 18mm - 140mm
Also available in Asian Fit

NAMESAKE:

Loseley Park, stately home in Surrey

COLLECTION:

Ladies Optical



CLANDON

A refined cat-eye sunglass in a rich black acetate featuring grey polarised lenses and etched metal temples. The Art Deco monogram pattern on the inside adds subtle character to this stylish and easy-to-wear frame.

SIZE:

53mm - 18mm - 140mm
Also available in Asian Fit

NAMESAKE:

Clandon Park, stately home in Surrey

COLLECTION:

Ladies Sunglasses



HATCHLANDS

Classic, yet undeniably stylish. This bold frame features a subtle Art Deco print on the inside of the etched metal temples. In contrast, Hatchland's strong, square shape adds character and masculinity.

SIZE:

51mm - 20mm - 140mm
Also available in Asian Fit

NAMESAKE:

Hatchlands Park, stately home in Surrey

COLLECTION:

Gentlemen's Optical



POLESDEN

Polesden is an aviator style sunglass with a bold metal browline and rounded acetate bridge. The classic grey polarised lenses on this frame help to deliver a strong, confident statement, reminiscent of timeless classics.

SIZE:

56mm - 14mm - 140mm
Also available in Asian Fit

NAMESAKE:

Polesden Lacey, stately home in Surrey

COLLECTION:

Gentlemen's Sunglasses



WALTER & HERBERT

MADE IN ENGLAND

1946

CONTACT DETAILS:

WEBSITE: www.walterandherbert.com

EMAIL: sales@walterandherbert.com

TEL: +44 (0) 151 526 2626

FAX: +44 (0) 151 526 6969

