



REYKJAVIK EYES

BLACK LABEL

CONTENTS

ABOUT REYKJAVIK EYES BLACK LABEL // 3

THE EYEWEAR COLLECTION

TITANIUM MODELS // 15

ACETATE IN-LAY & TITANIUM MODELS // 31

ACETATE & TITANIUM MODELS // 35


SUPRA MODELS // 38

RIMLESS MODELS // 41

PETITE MODELS // 47

GOLD EDITION // 50

RIMLESS TECH - NEW! // 53

A photograph of the Aurora Borealis (Northern Lights) over a glacier lagoon in Iceland. The sky is filled with vibrant purple and yellow light streaks. The water in the lagoon is dark with patches of ice, and the foreground shows dark, pebbly shores with some ice chunks.

AURORA BOREALIS OVER THE GLACIER
LAGOON, JOKULSARLON, IN ICELAND

BRAND ETHOS

"Black Label represents outstanding design and beautiful craftsmanship driven by Italian manufacturers who share our passion for perfection.

The results are beautifully crafted, lightweight frames with a seamless finish that maintain the ultimate comfort and performance."

Gunnar Gunnarsson, Founder

JAPANESE TITANIUM //

MADE IN ITALY //

LIGHTWEIGHT //

SCREWLESS //

HYPOALLERGENIC //

AERIAL PANORAMA OF
REYKJAVIK AT SUNSET

WHERE IT ALL BEGAN

Reykjavik Eyes was conceived by Icelandic frame designer Gunnar Gunnarsson. As a child, Gunnar worked in his parent's opticians in Iceland spending his summer holidays replacing lost screws and working on broken glasses.

This work spurred Gunnar to design his own frames and so, Reykjavik Eyes was born.

ACCOMPLISHED DESIGN

Gunnar took three years to design, test and refine his original idea. The result was ground-breaking and pushed the boundaries of frame design.

Reykjavik Eyes was recognised for its combination of technology, wearability and style.





SUNSET AT THE BLUE
LAGOON IN ICELAND

BLACK LABEL LAUNCH

In 2014, Reykjavik Eyes Black Label was launched. Skilfully designed in Iceland and expertly crafted in Italy from the highest quality beta titanium, these frames are exceptionally lightweight, screwless and hypoallergenic.

Today, the Black Label collection includes models in both titanium and acetate. They are some of the lightest and strongest frames ever made, offering a unique combination of comfort, strength and style.


INSPIRATION & COLOUR

Each of the sleek models are available in three colours that combine a sophisticated palette with hints of vibrant hues, all inspired by the landscape of Iceland.

Flashes of striking Japanese titanium paired with rich tones of Mazzucchelli acetate make for a bold and confident collection.



FEATURED FRAME // SKADI C4



TITANIUM EYEWEAR HAND
CRAFTED IN ITALY

ITALIAN CRAFTSMANSHIP

Manufactured in Italy by specialist craftsmen, every aspect of a Black Label frame is made to the highest standard. From the perfectly flush finish of the screwless hinge and the rich colours of the titanium, to the delicate branding on the end tips.

Every detail has been carefully considered allowing the wearer to express themselves without compromising on technicality.

STYLE MEETS COMFORT

Our passion for innovation and interpretation of style goes beyond the confines of fashion ensuring ultimate comfort and wearability.

Every aspect is considered from start to finish with the wearer in mind.



FEATURED FRAME // KARA C2

AS SEEN ON...



OTMAR SZAFNAUER

Chief Executive Officer & Team Principal
of the Aston Martin Formula One Team



CHARLOTTE DE CARLE

Presenter, DJ & Model



LESLIE BIBB

American Actress & Model

POINT OF SALE - STANDARD

LOGO BLOCK

W 17.5cm x H 11cm x D 2.5cm
Order code: REBLOCK002



LOGO BLOCK - BLACK

W 16cm x H 10cm x D 3cm
Order code: REBLOCK003



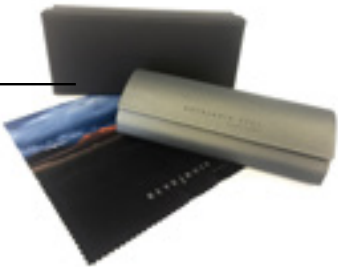
BRAND BOOK

A5
Order code: REA5B02



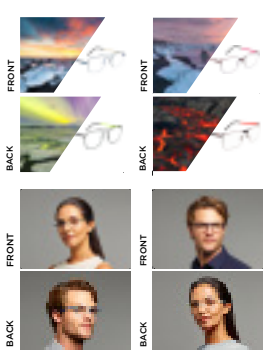
PACKAGING

Box, cloth & case
Order code: REYBLSET



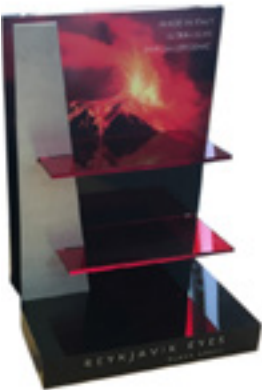
MAGNETIC FRAME INCLUDES 4 DOUBLE SIDED INSERTS

W 21cm x H 15.4cm x D 4cm
Order code: REBLINKIT



2PC DISPLAY STAND

W 24cm x H 33cm x D 18cm
Order code: REBLSTAND5



RAMP

W 18.5cm X L 32cm X H 6cm
Order code: REBLRAMP1



HANGING BANNER WITH CORD

W 50cm x H 150cm
Order code: REBLBAN3



PAPER BAG

With rope handles



MANUFACTURING TRAY *MINIMUM ORDER QUANTITIES APPLY

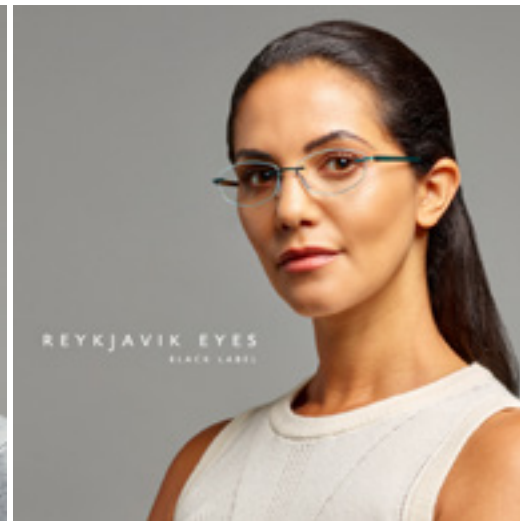
W 18cm x H 32.5cm x D 4.5cm
Order code: REBLTRAYKIT

NEW

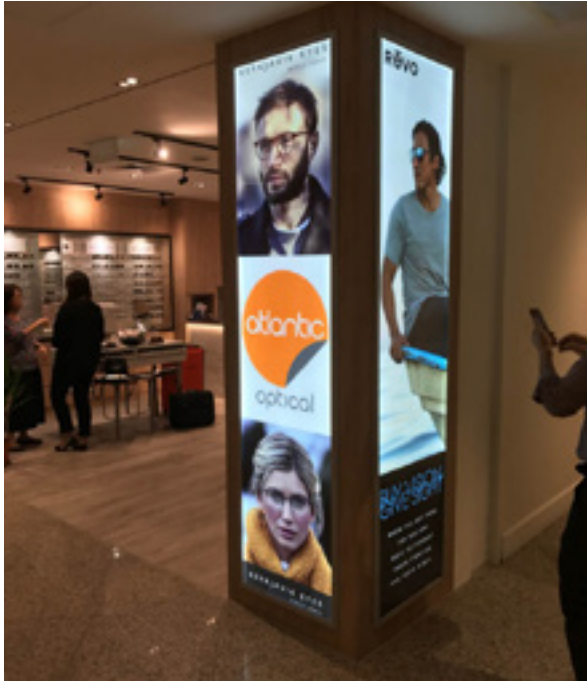


REYKJAVIK EYES
BLACK LABEL

CAMPAIGN PHOTOGRAPHY



IN STORE DISPLAYS



EXHIBITIONS

100% OPTICAL, LONDON



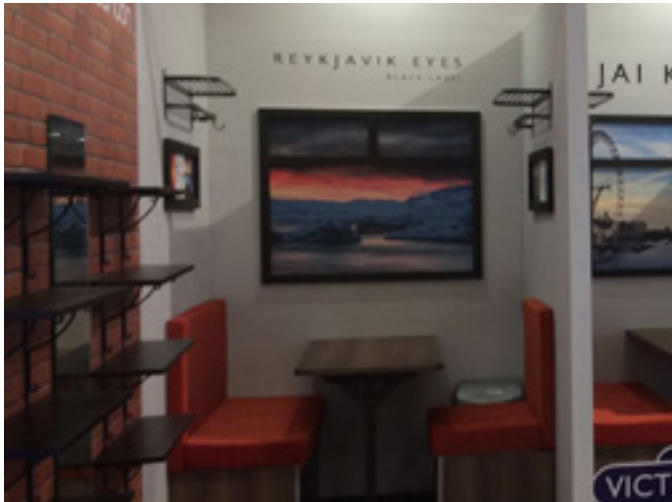
HONG KONG OPTICAL FAIR



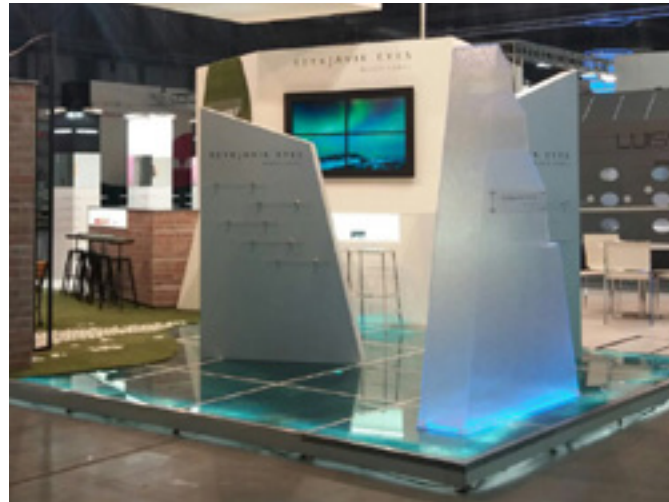
SILMO, PARIS



OPTI, MUNICH



MIDO, MILAN



VISION EXPO EAST, NEW YORK



TITANIUM MODELS

ALLY

ALLY features a curved rectangular front with upswept edges. The two tone, hand-sprayed titanium adds a stylish finish to these models which combine black, red and purple with gold.

C1 // BLACK & GOLD

ORDER CODE: REALL1
52-16-140



C2 // RED & GOLD

ORDER CODE: REALL2
52-16-140



C3 // PURPLE & GOLD

ORDER CODE: REALL3
52-16-140



ARIA **NEW**

ARIA is a contemporary take on the classic cat-eye shape. With minimalistic design, on trend colours, this is a highly wearable frame.

C1 // BURGUNDY & RED

ORDER CODE: REARI1
51-17-140



C2 // BLACK & PINK

ORDER CODE: REARI2
51-17-140



C3 // STONE & GOLD

ORDER CODE: REARI3
51-17-140



ATHENA

A striking frame available in a feminine range of colours. ATHENA features a distinctive pattern on the temples inspired by Iceland's glaciers.

C1 // RED

ORDER CODE: REATH1
52-16-140



C2 // PURPLE

ORDER CODE: REATH2
52-16-140



C3 // BLACK

ORDER CODE: REATH3
52-16-140



BEYLA

BEYLA is a petite rounded rectangular frame with striking colour combinations. Pairing black with magenta, emerald green with red and metallic purple with gold.

C1 // BLACK

ORDER CODE: REBEY1
52-15-145



C2 // BRUSHED TURQUOISE

ORDER CODE: REBEY2
52-15-145



C3 // BRUSHED PURPLE

ORDER CODE: REBEY3
52-15-145



C4 // PINK

ORDER CODE: REBEY4
52-15-145



BIL

BIL is a rounded aviator featuring cut out detailing on the temples and a double bridge, which adds style and character.

C1 // BLACK

ORDER CODE: REBIL1
50-20-145



C2 // GUN

ORDER CODE: REBIL2
50-20-145



C3 // BLUE

ORDER CODE: REBIL3
50-20-145



BRAGI

With the choice of four colourways, BRAGI is a simple yet striking round eye that offers something for everyone.

C1 // DARK GUN

ORDER CODE: REBRAG1
50-19-140



C2 // GOLD

ORDER CODE: REBRAG2
50-19-140



C3 // BLACK

ORDER CODE: REBRAG3
50-19-140



C4 // BLUE

ORDER CODE: REBRAG4
50-19-140



DELLING

A simple, but stylish frame, DELLING's use of contrasting colours add character and gives them a unique look.

C1 // DARK CHERRY

ORDER CODE: REDEL1
52-16-135



C3 // BLUE

ORDER CODE: REDEL3
52-16-135



C4 // PINK

ORDER CODE: REDEL4
52-16-135



EDEL

EDEL is a wider, rectangular frame for a sophisticated, but lightweight look. Each model comes in a mixture of striking colours, complementing its feminine character.

C1 // PINK & BLACK

ORDER CODE: REEDE1
51-16-145



C2 // WHITE & GOLD

ORDER CODE: REEDE2
51-16-145



C3 // NAVY & GOLD

ORDER CODE: REEDE3
51-16-145



EIR

EIR plays with contrasting colours for a bold look. The oval shape exudes style with a quirky twist.

C1 // PURPLE

ORDER CODE: REEIR1
51-17-135



C2 // RED

ORDER CODE: REEIR2
51-17-135



C3 // BLACK

ORDER CODE: REEIR3
51-17-135



C4 // PINK

ORDER CODE: REEIR4
51-17-135



ELVAR

ELVAR is a oversized square frame with a distinctive double bridge and unique split temples.

C1 // BLACK

ORDER CODE: REELV1
53-17-145



C2 // BRUSHED GUN

ORDER CODE: REELV2
53-17-145



C3 // BRUSHED BROWN

ORDER CODE: REELV3
53-17-145



EMBLA

EMBLA is a fashion conscious frame with a subtle colour palette creating a sophisticated look that complements any face shape.

C1 // BLACK

ORDER CODE: REEMB1
53-15-145



C2 // PURPLE

ORDER CODE: REEMB2
53-15-145



C3 // BLUE

ORDER CODE: REEMB3
53-15-145



FREDRIK **NEW**

FREDRIK is a large rectangular frame with a two-tone front. The hand-sprayed titanium adds a stylish finish to this modern frame.

C1 // GUN & ORANGE

ORDER CODE: REFRE1
56-18-145



C2 // BLACK & BLUE

ORDER CODE: REFRE2
56-18-145



C3 // BLUE & GOLD

ORDER CODE: REFRE3
56-18-145



FULLA

This unisex frame is fashion-forward and features a smart double bridge. FULLA boasts a rounded front to suit many face shapes.

C1 // BLACK

ORDER CODE: REFUL1
50-19-145



C2 // BRUSHED GUN

ORDER CODE: REFUL2
50-19-145



C3 // BRUSHED BROWN

ORDER CODE: REFUL3
50-19-145



HEIMDALL

HEIMDALL is a classic rectangular men's frame with contrasting bridge in three flattering colourways.

C1 // BLACK & GOLD

ORDER CODE: REHEIM1
54-18-140



C2 // GUN

ORDER CODE: REHEIM2
54-18-140



C4 // BLUE

ORDER CODE: REHEIM4
54-18-140



JESPER

This distinctively rounded yet angular frame bursts with retro vibes. JESPER is available in stone, brushed brown and orange, there is a colour for every occasion.

C1 // STONE

ORDER CODE: REJES1
47-22-145



C2 // BRUSHED BROWN

ORDER CODE: REJES2
47-22-145



C3 // ORANGE

ORDER CODE: REJES3
47-22-145



KARA

A fashionable choice with elegant details. From the double bridge to the oversized lenses, KARA radiates personality and style.

C1 // BLACK & GOLD

ORDER CODE: REKARA1
52-15-140



C2 // TEAL & GUN

ORDER CODE: REKARA2
52-15-140



C3 // BRUSHED PURPLE & GUN

ORDER CODE: REKARA3
52-15-140



LARA

An oversized cat eye with ombré detailing on the fronts. Black turns to purple in C1, C2 features a gradient red and on C3 deep blue fades into bright blue. This ombré effect is a new addition to the collection.

C1 // BLACK & PURPLE OMBRE

ORDER CODE: RELAR1
52-15-140



C2 // RED OMBRE

ORDER CODE: RELAR2
52-15-140



C3 // BLUE OMBRE

ORDER CODE: RELAR3
52-15-140



LOKI

A classic rectangular frame, LOKI features bright colours on the inside of the temples that contrast with the overall dark exterior of the frame.

C1 // GUN & BLUE

ORDER CODE: RELOKI1
54-17-140



C2 // BLACK & GREEN

ORDER CODE: RELOKI2
54-17-140



C3 // BROWN

ORDER CODE: RELOKI3
54-17-140



NOTT

NOTT is a feminine choice with split colours on the fronts. Slightly cat-eye in shape but remains understated and subtle.

C1 // BLACK & PURPLE

ORDER CODE: RENOTT1
52-16-135



C1 // PURPLE

ORDER CODE: RENOTT2
52-16-135



C1 // GUN & GOLD

ORDER CODE: RENOTT3
52-16-135



ODIN

ODIN delivers a stand out frame that portrays a masculine edge - bold in style and available in a range of easy-to-wear colours.

C1 // BLACK

ORDER CODE: REODIN1
56-18-140



C3 // DARK GUN

ORDER CODE: REODIN3
56-18-140



C4 // BLUE

ORDER CODE: REODIN4
56-18-140



RIKHARD **NEW**

RIKHARD features a geometric square front with a double bar bridge along the brow line. An understated titanium trend piece for anyone looking for an updated look.

C1 // GREEN & GUN

ORDER CODE: RERIK1
54-17-145



C2 // GUN & LIGHT BLUE

ORDER CODE: RERIK2
54-17-145



C3 // BLACK & RED

ORDER CODE: RERIK3
54-17-145



ROSBERG

ROSBERG is a larger take on the classic rectangular frame. C1 features a new colour of hand-sprayed gloss black titanium, while C2 is a subtle brushed gun and C3 is a bright and bold metallic blue.

C1 // GLOSS BLACK

ORDER CODE: REROS1
51-17-145



C2 // BRUSHED GUN

ORDER CODE: REROS2
51-17-145



C3 // BRIGHT BLUE

ORDER CODE: REROS3
51-17-145



SAGA

A unisex petite rectangular frame. Stand out with the bold coral on C5 or opt for a Reykjavik Eyes Black Label classic of black with neon green/yellow with C1.

C1 // BLACK & GREEN

ORDER CODE: RESAGA1
51-17-140



C3 // BLUE & RED

ORDER CODE: RESAGA3
51-17-140



C5 // CORAL

ORDER CODE: RESAGA5
51-17-140



SIF

Not your every day glasses, SIF is a rounded frame with angular edges. The frame and temples feature a mix of contrasting colours, creating a unique look.

C1 // BLUE & WHITE

ORDER CODE: RESIF1
51-16-135



C2 // BLACK & PINK

ORDER CODE: RESIF2
51-16-135



C3 // PURPLE

ORDER CODE: RESIF3
51-16-135



C4 // DARK RED

ORDER CODE: RESIF4
51-16-135



SKADI

A smaller take on the classic round-eye, SKADI is a contemporary frame that exudes old-style elegance. This timeless model pairs well with any outfit choice and suits all ages.

C1 // BRUSHED GUN

ORDER CODE: RESKA1
47-22-145



C2 // BLACK & GOLD

ORDER CODE: RESKA2
47-22-145



C3 // BRUSHED BROWN

ORDER CODE: RESKA3
47-22-145



C4 // ORANGE

ORDER CODE: RESKA4
47-22-145



SKOLL

SKOLL features a straight brow-line to emphasise the masculinity of its oversized rectangular profile.

C1 // BLACK

ORDER CODE: RESKO1
58-18-150



C2 // BRUSHED GUN

ORDER CODE: RESKO2
58-18-150



C3 // BLUE

ORDER CODE: RESKO3
58-18-150



STEFAN

Classic and easy to wear, STEFAN's rectangular shape adds a contemporary and masculine edge to this otherwise understated frame.

C1 // BLACK

ORDER CODE: RESTE1
53-17-145



C2 // GUN

ORDER CODE: RESTE2
53-17-145



C3 // NAVY

ORDER CODE: RESTE3
53-17-145



SUNNA

SUNNA is inspired by the classic Aviator style. Pairing black with vibrant lime green or blue and gold with a striking red.

C1 // GOLD

ORDER CODE: RESUN1
55-15-145



C2 // BLACK

ORDER CODE: RESUN2
55-15-145



C3 // GUN

ORDER CODE: RESUN3
55-15-145



SURT

A fashionable choice, SURT is a chic frame that features a thick brow line and cut out wing detailing.

C1 // BLACK

ORDER CODE: RESUR1
51-19-145



C2 // BLACK & GOLD

ORDER CODE: RESUR2
51-19-145



C3 // TEAL & GUN

ORDER CODE: RESUR3
51-19-145



THOR

THOR is a petite rectangular frame, available in three sophisticated colours. The refined frame delivers a classy feel.

C1 // BROWN & BLUE

ORDER CODE: RETHOR1
52-18-140



C2 // GUN

ORDER CODE: RETHOR2
52-18-140



C3 // BROWN

ORDER CODE: RETHOR3
52-18-140



VILI

VILI is a classic round eye frame suited to many face types. Available in black with red inside temples, brushed gun with orange inside temples and brushed teal with pink inside temples.

C1 // BLACK

ORDER CODE: REVIL1
47-21-145



C2 // BRUSHED GUN

ORDER CODE: REVIL2
47-21-145



C3 // BRUSHED TEAL

ORDER CODE: REVIL3
47-21-145



VOR

This wonderfully rounded frame takes on the classic Aviator look. VOR has dark features with brighter colours on the inside temples making it a stand out frame.

C1 // BLUE

ORDER CODE: REVOR1
50-20-145



C2 // BRUSHED GUN

ORDER CODE: REVOR2
50-20-145



C3 // BLACK

ORDER CODE: REVOR3
50-20-145



ACETATE IN-LAY & TITANIUM MODELS

AGNAR

AGNAR is a bold combination of acetate and titanium. The round eye profile is complemented by the double bridge and angular accents.

C1 // BLACK & GOLD

ORDER CODE: REAGN1
48-21-145



C2 // TORT

ORDER CODE: REAGN2
48-21-145



C3 // GREY

ORDER CODE: REAGN3
48-21-145



ELENA

A clean and refined rounded style with modern colour combinations. ELENA delivers a stylish look that complements most face shapes.

C1 // BLACK & GOLD

ORDER CODE: REELE1
51-18-140



C2 // WHITE & GOLD

ORDER CODE: REELE2
51-18-140



C3 // DARK RED & GOLD

ORDER CODE: REELE3
51-18-140



KARL

KARL is an oversized rectangular frame with a distinctive double bridge. The bold colourways deliver a sophisticated and unique look.

C1 // GREY & ORANGE

ORDER CODE: REKARL1
51-19-145



C2 // BLACK & GUN

ORDER CODE: REKARL2
51-19-145



C3 // GREY & GREEN

ORDER CODE: REKARL3
51-19-145



MARKUS

A unique square frame, MARKUS delivers a fashion-forward look in a range of colours.

C1 // BLACK

ORDER CODE: REMARK1
49-19-145



C2 // BLACK & GOLD

ORDER CODE: REMARK2
49-19-145



C3 // BLACK & BLUE

ORDER CODE: REMARK3
49-19-145



SOFIE

A perfect rounded frame that combines beautiful acetate with technical titanium. SOFIE is bursting with bold colours and lighter shades around the bridge and temples.

C1 // PURPLE

ORDER CODE: RESOF1
50-21-145



C2 // NUDE & GOLD

ORDER CODE: RESOF2
50-21-145



C3 // BLACK

ORDER CODE: RESOF3
50-21-145



ACETATE & TITANIUM MODELS

ELLA

A beautiful blend of rich acetate and bright titanium. ELLA delivers a fashionable statement with its eye-catching colour combinations.

C1 // BLACK

ORDER CODE: REA/ELL1
51-16-140



ALSO AVAILABLE IN ASIAN FIT - ORDER CODE: REA/ELL1/A

C2 // PURPLE

ORDER CODE: REA/ELL2
51-16-140



ALSO AVAILABLE IN ASIAN FIT - ORDER CODE: REA/ELL2/A

C3 // STONE

ORDER CODE: REA/ELL3
51-16-140



ALSO AVAILABLE IN ASIAN FIT - ORDER CODE: REA/ELL3/A

GOTI

GOTI is a bold, rectangular frame with a distinctive double bridge. Available in three striking colours; vivid blue, smoky grey and ocean teal.

C1 // BLUE

ORDER CODE: REA/GOT1
52-15-145



ALSO AVAILABLE IN ASIAN FIT - ORDER CODE: REA/GOT1/A

C2 // GREY SMOKE

ORDER CODE: REA/GOT2
52-15-145



ALSO AVAILABLE IN ASIAN FIT - ORDER CODE: REA/GOT2/A

C3 // TEAL

ORDER CODE: REA/GOT3
52-15-145



ALSO AVAILABLE IN ASIAN FIT - ORDER CODE: REA/GOT3/A

KARLI

A striking combination of acetate and titanium. KARLI is a perfect choice for those looking for a subtle round eye frame in neutral tones with a hint of colour on the inside temple.

C1 // GREY SMOKE

ORDER CODE: REA/KARLI1
47-21-145



ALSO AVAILABLE IN ASIAN FIT - ORDER CODE: REA/KAR1/A

C2 // STONE

ORDER CODE: REA/KARLI2
47-21-145



ALSO AVAILABLE IN ASIAN FIT - ORDER CODE: REA/KAR2/A

C3 // BROWN TORT

ORDER CODE: REA/KARLI3
47-21-145



ALSO AVAILABLE IN ASIAN FIT - ORDER CODE: REA/KAR3/A

ELSA

ELSA is a petite and feminine model in the new Supra Collection. The subtle colourways of black, teal and red ensure the frame is easy-to-wear and suits many face shapes.

C1 // BLACK

ORDER CODE: REELS1
52-16-140



C2 // BRUSHED TEAL

ORDER CODE: REELS2
52-16-140



C3 // RED

ORDER CODE: REELS3
52-16-140



ERIKA

ERIKA is an oversized round eye with a curved double bridge. A stylish supra frame in three colours including a light powder blue-grey and a royal purple - both of which are new to the Black Label collection.

C1 // LIGHT BLUE

ORDER CODE: REERI1
50-18-145



C2 // PURPLE

ORDER CODE: REERI2
50-18-145



C3 // BRUSHED GOLD

ORDER CODE: REERI3
50-18-145



NEO

NEO is a classic men's supra frame available in three colours - black, brown and blue. C1 and C2 feature two tone detailing - a brushed gun bridge on the black and gold bridge on the brushed brown.

C1 // BLACK

ORDER CODE: RENE01
54-18-145



C2 // BRUSHED BROWN

ORDER CODE: RENE02
54-18-145



C3 // BLUE

ORDER CODE: RENE03
54-18-145



RAKNAR

RAKNAR is an oversized rounded square frame with a distinctive double bridge. The colours remain muted allowing the bold shape of the supra frame to stand out.

C1 // BLUE

ORDER CODE: RERAK1
51-18-145



C2 // BLACK

ORDER CODE: RERAK2
51-18-145



C3 // BRUSHED GUN

ORDER CODE: RERAK3
51-18-145



RIMLESS MODELS

ALBA

ALBA is an aviator shaped rimless frame featuring a dramatic double bridge in three tonal colourways.

C1 // BLACK

ORDER CODE: REALB1
54-15-145



C2 // LIGHT GUN

ORDER CODE: REALB2
54-15-145



C3 // BRUSHED BROWN

ORDER CODE: REALB3
54-15-145



ARNA

ARNA is a slightly smaller rimless choice with quirky, angular shaped lenses. Easy to wear, this frame is available in a vibrant range of contrasting colours.

C1 // BRUSHED RED

ORDER CODE: REARN1
55-15-140



C2 // GOLD

ORDER CODE: REARN2
55-15-140



C3 // PINK

ORDER CODE: REARN3
55-15-140



ERON

ERON is classic in shape with subtle angular edges around the bridge. This best-selling frame is now available in six colourways to ensure there is something for everyone.

C1 // NAVY

ORDER CODE: REERO1
54-17-145



C2 // LIGHT GUN

ORDER CODE: REERO2
54-17-145



C3 // BLACK

ORDER CODE: REERO3
54-17-145



C4 // GOLD

ORDER CODE: REERO4
54-17-145



C5 // BLACK

ORDER CODE: REERO5
54-17-145



C6 // BLUE

ORDER CODE: REERO6
54-17-145



EDVIN

EDVIN is classic in shape, the lightweight titanium details and pop of colour on the inside temple adds subtle characteristics to this rimless frame.

C1 // BLUE

ORDER CODE: REEDV1
56-17-145



C2 // BRUSHED GUN

ORDER CODE: REEDV2
56-17-145



C3 // BLACK

ORDER CODE: REEDV3
56-17-145



HENRIK

Angular in style, HENRIK stands out with it's modern shape and bold colourways. Easy to wear, this rimless frame adds a quirky statement to any look.

C1 // BLACK & BLUE

ORDER CODE: REHEN1
49-19-145



C2 // GUN & RED

ORDER CODE: REHEN2
49-19-145



C3 // BLACK & GREEN

ORDER CODE: REHEN3
49-19-145



IVAN

IVAN is traditionally rectangular in shape, with lightweight titanium details that emphasise the subtle characteristics of this rimless frame.

C1 // BLACK

ORDER CODE: REIVA1
56-17-145



C2 // LIGHT GUN

ORDER CODE: REIVA2
56-17-145



C3 // BRUSHED BLUE

ORDER CODE: REIVA3
56-17-145



MARTA

MARTA is a smaller rimless choice with quirky, angular shaped lenses in a feminine range of colours.

C1 // BRUSHED PURPLE

ORDER CODE: REMAR1
51-15-145



C1 // BRUSHED TEAL

ORDER CODE: REMAR2
51-15-145



C1 // PINK

ORDER CODE: REMAR3
51-15-145



TEKLA

TEKLA features rounded lenses with bright and bold inside temples. The quirky bridge offers a distinctive look for all face shapes.

C1 // BLACK

ORDER CODE: RETEK1
50-17-145



C2 // BRUSHED GUN

ORDER CODE: RETEK2
50-17-145



C3 // BRUSHED BROWN

ORDER CODE: RETEK3
50-17-145



PETITE MODELS

ARON

ARON is a petite titanium rectangular frame available in three flattering colourways, A simple, yet stylish choice.

C1 // NAVY

ORDER CODE: REARO1
47-16-125



C2 // DARK RED

ORDER CODE: REARO2
47-16-125



C3 // BROWN

ORDER CODE: REARO3
47-16-125



RUNI

RUNI is an oval titanium frame with the brightest and most exciting contrasting colours of the petite collection.

C1 // NAVY & RED

ORDER CODE: RERUN1
48-16-125



C2 // BLUE

ORDER CODE: RERUN2
48-16-125



C3 // BRUSHED BROWN

ORDER CODE: RERUN3
48-16-125



SEFI

SEFI is a rounded rectangle frame. Easy to wear, highly durable and available in three fun colourways.

C1 // BLUE

ORDER CODE: RESEF1
47-16-125



C1 // GUN

ORDER CODE: RESEF2
47-16-125



C1 // PURPLE

ORDER CODE: RESEF3
47-16-125





**GOLD
EDITION**

ELDFELL

C1 // 18K GOLD

ORDER CODE: REG/ELD1
53-18-140

ELDFELL is a classic and easy to wear rectangular frame plated in 18k satin gold ensuring a subtle and stylish look.



HENGILL

C1 // 18K GOLD

ORDER CODE: REG/HEN1
49-19-145

HENGILL is the most recent release to our Gold Edition collection. A bold and angular rimless frame in 18k Gold plated titanium.



KERID

C1 // 18K GOLD

ORDER CODE: REG/KER1
52-18-140

This rectangular shaped frame with its unique angular design suits those looking for something striking but with a modest shape.



KRAFLA

C1 // 18K GOLD

ORDER CODE: REG/KRA1
47-22-140

KRAFLA is a frame based on one of our best-selling Black Label frames, SKADI. A classic round eye with an angular bridge.



SURTSEY

C1 // 18K GOLD

ORDER CODE: REG/SUR1
47-22-145



SURTSEY keeps the classic round-eye shape with the natural grooves of the brow line that suits all face shapes.

HEKLA

C1 // 18K GOLD

ORDER CODE: REG/HEK1
58-14-145



Dark grey rectangular polarised lenses offer both style and protection against the sun. The double bridge offers an unique and contemporary style.

KATLA

C1 // 18K GOLD & GREY

ORDER CODE: REG/KAT1
50-19-145



C2 // 18K GOLD & BLUE

ORDER CODE: REG/KAT2
50-19-145



C3 // 18K GOLD & GOLD

ORDER CODE: REG/KAT3
50-19-145



These sunglasses feature either dark grey flash, light blue or gold mirror lenses. The thin gold plated titanium frames have a rounded bridge to complement the round eye fronts.

RIMLESS TECH

ABOUT

// RIMLESS TECH

EVERY FRAME IN THE COLLECTION FEATURES A **SILICONE BAND** AROUND THE LENS RIM, NOT ONLY ADDING A **POP OF COLOUR**, BUT **DEFINING THE SHAPE** OF THE LENS TOO.

USING **INNOVATIVE SCREWLESS TECHNOLOGY**, EACH RIMLESS TECH MODEL HAS BEEN DESIGNED WITH **LIGHTWEIGHT TITANIUM MATERIAL**, SILICONE TEMPLE TIPS AND RIVETED TEMPLE HEADS.

SHAPED BY THE FORCES OF NATURE, OUR INSPIRATION IS DRAWN FROM THE ICONIC LANDSCAPES OF **ICELAND**. FROM THE DANCING **AURORA BOREALIS** TO **TURQUOISE BLUE GLACIERS**, THROUGH TO THE VAST **VOLCANIC DESERTS** AND STAGGERING WATERFALLS.

RIMLESS TECH

// SILICONE BAND

THE **SILICONE BAND** ADDS AN ALMOST
TRANSPARENT **FLASH OF COLOUR** TO THE RIM.
A **MODERN TAKE** ON A **CLASSIC STYLE**.



SIRUS

SIRUS boasts colour flashes indicative of the vivid shades of the Aurora Borealis. This colour pop is enhanced further by the clever addition of a matching coloured silicone band, beautifully framing this angular round eye frame.

SIRUS gives a modern and futuristic look.

SIZE // 49MM - 17MM - 145MM

TYPE // RIMLESS TECH

GENDER // UNISEX



FRAME COLOUR // C1 - BRUSHED GUN & BLUE

SILICONE BAND COLOUR // BLUE



FRAME COLOUR // C2 - BRUSHED TEAL & PURPLE

SILICONE BAND COLOUR // PURPLE



FRAME COLOUR // C3 - BLACK & NEON YELLOW

SILICONE BAND COLOUR // BLACK

ANDRES

ANDRES is a bold statement piece for any wearer. The icy cold blue tones of C2 are drawn straight from the jagged and vast glaciers of Iceland, whilst the deep navy blue in C3 is reminiscent of the dark night sky whilst waiting for the flashes of the aurora borealis.

The silicone band enhances the rectangle shape with subtle angular features to give a modern feel. The rimless style ensures the frame is lightweight and comfortable.

SIZE // 54MM - 17MM - 145MM

TYPE // RIMLESS TECH

GENDER // MEN'S



FRAME COLOUR // C1 - GOLD & BLACK

SILICONE BAND COLOUR // BLACK



FRAME COLOUR // C2 - LIGHT GUN & BLUE

SILICONE BAND COLOUR // BLUE



FRAME COLOUR // C3 - BLACK & NAVY

SILICONE BAND COLOUR // NAVY

ALEXIS

ALEXIS is a petite choice with geometric almost diamond shaped lenses - ALEXIS is both elegant and sophisticated.

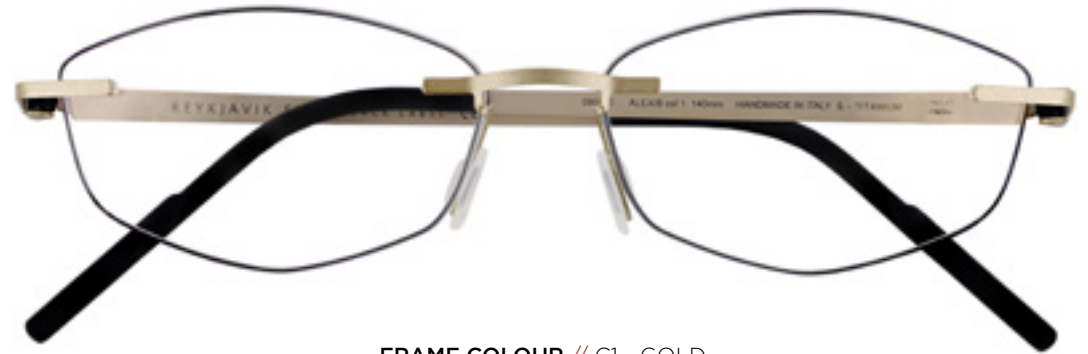
Available in a feminine range of colours. From the classic combination of black and gold in C1, to the brushed teal with complementary teal silicone band in C2 through to the feminine pastel frosted pink in C3 with a vibrant pink silicone band.

ALEXIS is angular in all the right places.

SIZE // 53MM - 15MM - 140MM

TYPE // RIMLESS TECH

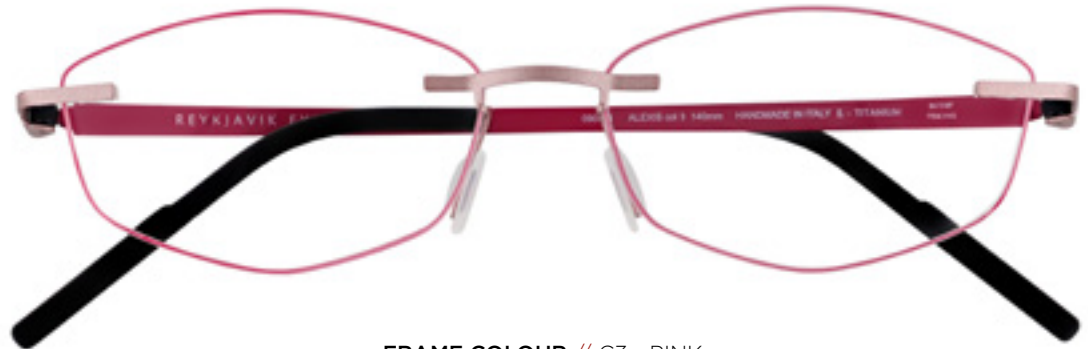
GENDER // LADIES



FRAME COLOUR // C1 - GOLD
SILICONE BAND COLOUR // BLACK



FRAME COLOUR // C2 - BRUSHED TEAL & GOLD
SILICONE BAND COLOUR // TEAL



FRAME COLOUR // C3 - PINK
SILICONE BAND COLOUR // PINK

ERIK

ERIK - classic in shape but bold in style. The silicone bands offer a futuristic finish whilst the rectangular shape ensures ERIK is easy-to-wear.

The colour combinations within ERIK are simplistic and subtle. C1 features deep navy and light blue, brushed brown and vibrant blue for C2 and a classic black and gold combination for C3.

SIZE // 53MM - 17MM - 145MM

TYPE // RIMLESS TECH

GENDER // MEN'S



FRAME COLOUR // C1 - NAVY & LIGHT BLUE

SILICONE BAND COLOUR // LIGHT BLUE



FRAME COLOUR // C2 - BRUSHED BROWN & BLUE

SILICONE BAND COLOUR // BLUE



FRAME COLOUR // C3 - BLACK & GOLD

SILICONE BAND COLOUR // BLACK

REYKJAVIK EYES
BLACK LABEL

HEAD OFFICE

83 Sefton Lane
Maghull
Liverpool
Merseyside
L31 8BU
United Kingdom

EMAIL: info@reykjavikeyes.com // TEL: **+44 (0) 151 526 2626** // FAX: **+44 (0) 151 526 6969**