

LK BENNETT

LONDON

# THE OPTICAL COLLECTION

Drawing inspiration from the clothing range, L.K.Bennett eyewear embodies style and confidence. The signature detailing adds a hint of luxury, whilst the flattering shapes remain trendy and fashionably understated.

# CAMPAIGN PHOTOGRAPHY

NEW!



LKB054 C3

NEW!



LKB058 C2

NEW!



LKB069 C3



LKB061 C3



LKB066 C4

# LKB001

A timeless staple, this frame is the perfect addition to any look. The Tudor rose detailing on the tips adds a hint of luxury.

Eye size: 52mm

Bridge: 16mm

Temple: 135mm



C1 BLACK & TORT



C2 TORT



C3 BROWN

# LKB003

LKB003 is classic in shape and features a combination of metal and acetate. The colours are simple, yet elegant and easy to wear.

Eye size: 53mm  
Bridge: 15mm  
Temple: 135mm



C1 BLACK & TORT



C2 BROWN & NUDE



C3 RED

# LKB004

A playful frame with vibrant hues that draw attention to the eyes. Whilst the front radiates personality, the sleek metal temple with complementary acetate tips add a touch of elegance.

Eye size: 51mm  
Bridge: 15mm  
Temple: 140mm



C2 BLUE TORT & GOLD



C3 BROWN TORT & GOLD



C4 PURPLE TORT & GOLD

# LKB006

A beautifully proportioned rounded style, adorned with golden details. The black front paired with pearlised tort temples is a seamless blend, subtle enough that it would complement any look, whilst the blue front and vibrant tort frame is perfect for anyone looking for a more contemporary look.

Eye size: 50mm  
Bridge: 16mm  
Temple: 135mm



C1 BROWN TORT



C2 BLACK & BROWN TORT

# LKB007

A flattering style in deep maroon and vibrant red tortoise shell hues (C2) and a light tortoise shell front paired with contrasting soft taupe and black temples (C3). The golden L.K.Bennett branding enhances the frame's distinctive feminine appearance.

Eye size: 49mm  
Bridge: 16mm  
Temple: 135mm



C2 DARK RED TORT



C3 TORT & BROWN



# LKB008

The understated essence of this metal frame is enhanced by subtle grooves and gold detailing, to create a sleek and contemporary look.

Eye size: 52mm

Bridge: 15mm

Temple: 135mm



C3 RED



C4 BROWN

# LKB009

A classic round eye frame with a modern keyhole bridge. Subtle gold branding offers a sophisticated finish. Available in three distinctive colourways.

Eye size: 46mm

Bridge: 20mm

Temple: 140mm



C1 BROWN & RED TORT



C3 PINK

# LKB010

This round eye metal fronted frame is finished off perfectly with a metal screw detail inspired by the hardware from the L.K.Bennett range of accessories.

Eye size: 51mm  
Bridge: 15mm  
Temple: 140mm



C1 BLACK



C2 TURQUOISE



C3 RED & TORT

# LKB011

An oversized round-eye, this frame remains feminine and delicate with refined gold detailing on the thin temples and on the front rivets.

Eye size: 51mm

Bridge: 19mm

Temple: 140mm



C1 BLACK



C2 TORT



C3 NUDE

# LKB013

Dazzle in this flattering cat eye shaped frame that exudes glamour. Colour 1 features a beautiful two tone, ombre effect acetate, whilst colour 3 is mottled with glittered mocha tones.

Eye size: 53mm  
Bridge: 17mm  
Temple: 135mm



C1 RED STRIPE



C2 BLUE GLITTER



C3 BLACK GLITTER

LK BENNETT  
LONDON

# LKB014

This chunky rounded rectangle frame is a great choice for most face shapes. The delicate gold branding adds a perfect finishing touch.

Eye size: 53mm

Bridge: 16mm

Temple: 135mm



C2 PURPLE



C4 BLACK

# LKB015

A flattering shape that will suit most face shapes.  
Colour 3 has a beautiful layered crystal acetate  
front with a gradient effect.

Eye size: 50mm  
Bridge: 16mm  
Temple: 135mm



C1 RED TORT



C2 BROWN TORT



C3 PURPLE GRAD

# LKB016

A classic rectangular shape, this timeless frame features subtle gold temple detailing and an embossed logo that neatly finishes off the frame.

Eye size: 52mm

Bridge: 14mm

Temple: 135mm



C3 RED



# LKB017

Inspired by the delicate, feminine detailing synonymous with L.K.Bennett, the temples of this frame almost resemble jewellery. The metal front adds an extra touch of sophistication.

Eye size: 52mm  
Bridge: 17mm  
Temple: 135mm



C1 BLACK & GOLD



C2 GREY & GOLD



C3 PURPLE & GOLD

LK BENNETT  
LONDON

# LKB018

The temples of this frame feature a laser engraved snake print that add a touch of character and texture.

Eye size: 49mm

Bridge: 16mm

Temple: 135mm



C1 RED



C2 PINK



C3 BROWN

# LKB020

Chic and understated, this classic rectangular frame beautifully complements the eyes. The colour palettes are carefully selected to create a harmonious balance between the metal fronts and acetate temples.

Eye size: 52mm  
Bridge: 16mm  
Temple: 135mm



C1 RED



C3 NAVY & TORT



C4 BROWN & NUDE

# LKB022

LKB022 features a harmonious blend of rich coloured acetate on the outside blending perfectly into tortoiseshell on the inside.

Eye size: 51mm

Bridge: 16mm

Temple: 135mm



C1 RED & TORT



C2 BLUE & TORT



C3 BLACK TORT

# LKB023

A modern, refined take on the classic round-eye shape. The elegant form makes this frame easy to wear, whilst the warm hues from the tortoiseshell acetate draw attention to the eyes.

Eye size: 51mm

Bridge: 19mm

Temple: 140mm



C1 BLACK



C2 TORT

# LKB027

A clean and refined style with modern colour combinations. This timeless frame delivers a stylish look that complements most face shapes.

Eye size: 50mm

Bridge: 15mm

Temple: 135mm



C1 BLACK



C2 BLUE



C3 PINK & PURPLE

# LKB036

Featuring a harmonious blend of rich coloured acetate, this striking frame adds an elegant statement to any look. The golden L.K.Bennett branding enhances the frame's distinctive feminine appearance.

Eye size: 52mm  
Bridge: 16mm  
Temple: 140mm



C2 RED & GOLD



C3 TORT & GOLD



C4 PURPLE & GOLD

# LKB043

A playful frame with vibrant hues that draws attention to the eyes. The slight detailing on the temple tips adds exudes luxury, whilst adding a subtle dimension to this sophisticated frame.

Eye size: 52mm  
Bridge: 16mm  
Temple: 138mm



C1 BROWN & NUDE



C2 BLACK & BLUE



C3 RED



# LKB047

An easy-to-wear petite supra frame available in three colours. LKB047 features a perfect blend of metal and acetate. C1 Blue and C2 Purple feature a fashionable ombré effect along the temples whilst C3 Black stays classic with tortoiseshell temples.

Eye size: 51mm  
Bridge: 17mm  
Temple: 138mm



C1 BLUE & TURQUOISE



C3 PURPLE & PINK



C4 BLACK & TORT

LK BENNETT  
LONDON

# LKB050

A deep rectangular frame with bold colour combinations of brown and periwinkle blue in C1, deep red and peach in C2 and classic tort and nude in C3.

LKB050 is perfectly finished off with a simple metal logo plaque on the temples.

Eye size: 51mm  
Bridge: 15mm  
Temple: 135mm



C1 TORT & BLUE



C2 BURGUNDY & PINK



C4 TORT

# LKB054

Stylish and eye-catching, the classic round shape of this frame is complimented by sleek metal hinges.

Available in stunning burgundy and blue with a tort finish, and a classic tort.

Eye size: 50mm  
Bridge: 17mm  
Temple: 135mm

NEW



C1 BURGUNDY



C2 BLUE



C3 TORT

LK BENNETT  
LONDON

# LKB058

A round shape with a raised brow line, this frame has a luxurious and feminine feel, finished off with the signature LK Bennett branding along the hinge.

Available in three sophisticated colours - brown, burgundy and navy.

Eye size: 52mm  
Bridge: 15mm  
Temple: 135mm

NEW



C1 BROWN



C2 BURGUNDY



C3 NAVY

# LKB059

This rounded rectangular frame comes in three autumnal colours - C1 Brown, C2 Red and C3 Black. The acetate fronts are complemented by the rope effect gold metal temples and subtle logo plaque.

Eye size: 49mm  
Bridge: 16mm  
Temple: 135mm



C2 BROWN & GOLD



C3 RED & GOLD



C4 BLACK & GOLD

# LKB061

LKB061 is a contemporary wire style frame with signature L.K.Bennett light gold detailing. The two tone front adds a modern feel to the vintage cat-eye shape.

The colours of black, red and blue are simple, yet fashionably classic.

Eye size: 52mm

Bridge: 17mm

Temple: 135mm

LK BENNETT  
LONDON



C1 BLACK & GOLD



C2 RED & GOLD



C3 BLUE & GOLD

# LKB066

LKB066 has been inspired by jewellery - the chain temples work perfectly with the rich acetate fronts.

Rounded rectangle in shape, LKB066 offers the colour options of red, teal or tort combined with the iconic gold chain detailing.

Eye size: 50mm  
Bridge: 16mm  
Temple: 140mm



C2 BURGUNDY & GOLD



C3 TEAL & GOLD



C4 TORT & GOLD



# LKB069

An elegant oversized square frame with a glossy finish. Chain detailing on the inside temple adds a touch of glamour.

Available in a classy tort, crystal pink and blue.

Eye size: 50mm  
Bridge: 16mm  
Temple: 140mm

NEW



C1 TORT



C2 BLUE



C3 PINK

LK BENNETT  
LONDON



# THE SUN COLLECTION

Discover the expertly crafted women's sunglass collection that showcases chic, sophisticated and contemporary styles with a luxurious and high-end aesthetic.

Following the success of the optical launch in early 2018, the sunglass collection features eight models, each in two colourways offering a style to suit everyone. With inspiration drawn from the iconic and timeless clothing range, the collection exudes confidence and female empowerment.

Using a combination of metal and acetate, the shapes within the collection have been designed for those who want to look effortlessly polished and feel their best.

# LKBSUN01

Sophisticated yet fun, this frame exudes femininity.  
An oversized rounded rectangular sunglass with  
metal detailing and simple branding.

Eye size: 57mm

Bridge: 16mm

Temple: 140mm



C1 PINK



C4 BLACK

# LKBSUN08

A classic aviator style sunglass with gradient lenses and ribbed metal detailing on the temples. The double bridge adds character whilst the simple colourways ensure a stylish and feminine look.

Eye size: 58mm

Bridge: 15mm

Temple: 140mm



C1 GOLD



C2 ROSE GOLD

# LKBSUN11

A simple, chunky acetate sunglass with a rounded bridge and oversized lenses. Available in blush pink and brown tort. Subtle gold branding completes the frame perfectly.

Eye size: 52mm

Bridge: 20mm

Temple: 140mm



C1 PINK



C3 TORT

# LKBSUN13

This classic round eye sunglass is available in two colourways. The subtle tort branding plaques add a touch of class whilst the simple shape ensures the frame is easy to wear and offers a fashionable finish.

Eye size: 51mm  
Bridge: 19mm  
Temple: 140mm



C1 BLACK



C3 DARK RED

LK BENNETT  
LONDON

# LKBSUN15

This oversized sunglass features eye-catching diamante detailing alongside subtle branding and glossy acetate. The black (C1) is available in a slightly larger eye size to suit a variety of face shapes.

Eye size: C1: 55mm / C3: 53mm

Bridge: 18mm

Temple: 140mm



C1 BLACK & TORT



C3 BLUE TORT

# LKBSUN19

A twist on the classic clubmaster style sunglass with a combination of metal and acetate. The skinny bridge works well with the thicker browline to create a glamorous and luxurious style.

Eye size: 56mm  
Bridge: 16mm  
Temple: 138mm



C1 PINK



C2 TORT

# LKBSUN27

A fashion-forward and stylish sunglass with a skinny bridge and cat eye detailing in acetate with metal edging. Available in a nude pink and a natural tortoiseshell.

Eye size: 53mm

Bridge: 15mm

Temple: 135mm



C1 NUDE



C2 TORT



# POINT OF SALE



2 Piece Stand:  
W21.5cm x H6cm x D10cm  
LKBSTAKIT1

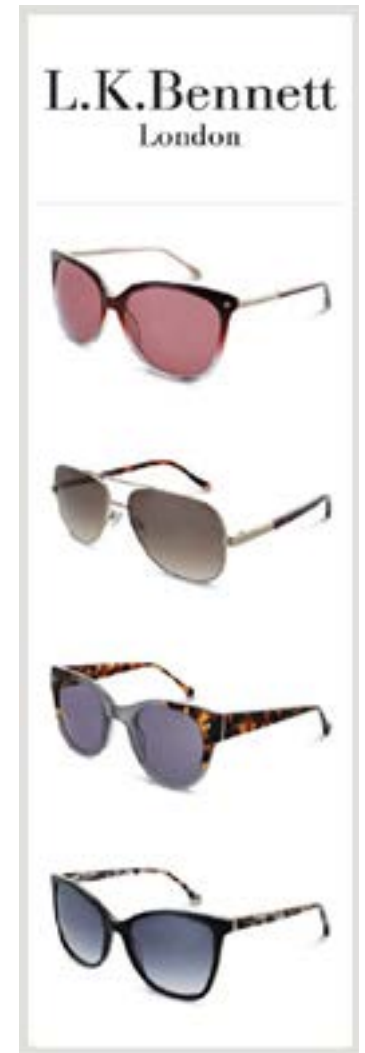


Block:  
W15cm x H9cm x D2cm  
LKBBLOCK01

LK BENNETT  
LONDON



Optical Banner:  
W50cm x H150cm  
LKBBAN02



Sun Banner:  
W50cm x H150cm  
LKBSUNBAN1

LK BENNETT

LONDON

# LKBSUN12

An oversized, acetate round eye sunglass with a chunky front and deep temples. A quirky style to make a statement.

Eye size: 49mm

Bridge: 23mm

Temple: 135mm



C1 GREY



C2 NUDE

# LKBSUN20

A contemporary style sunglass with round lenses, a skinny bridge and metal cat eye detailing. The acetate temples finish the frame off perfectly.

Eye size: 52mm

Bridge: 16mm

Temple: 140mm



C1 BRONZE



C4 BLACK