

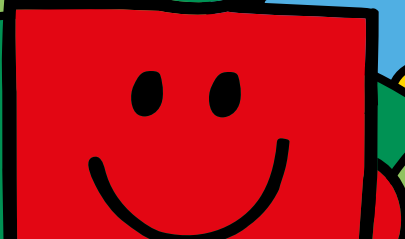
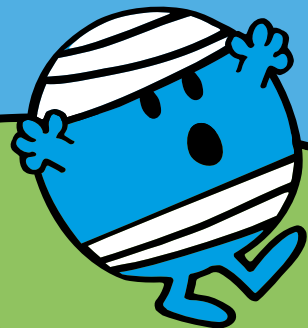
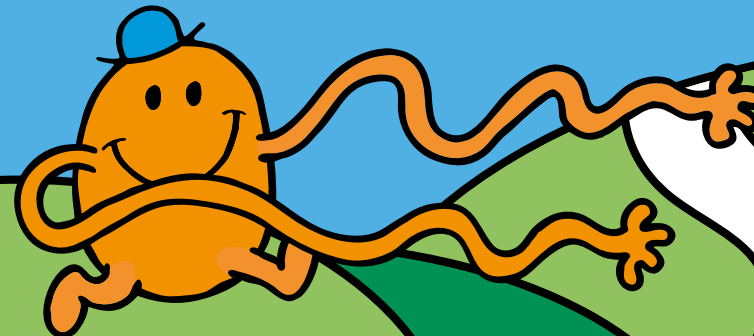
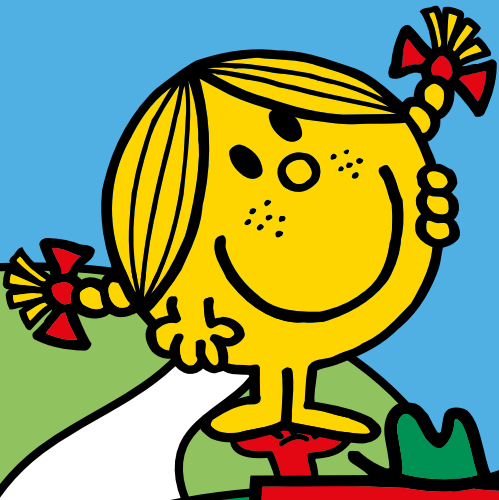
MR. MEN LITTLE MISS

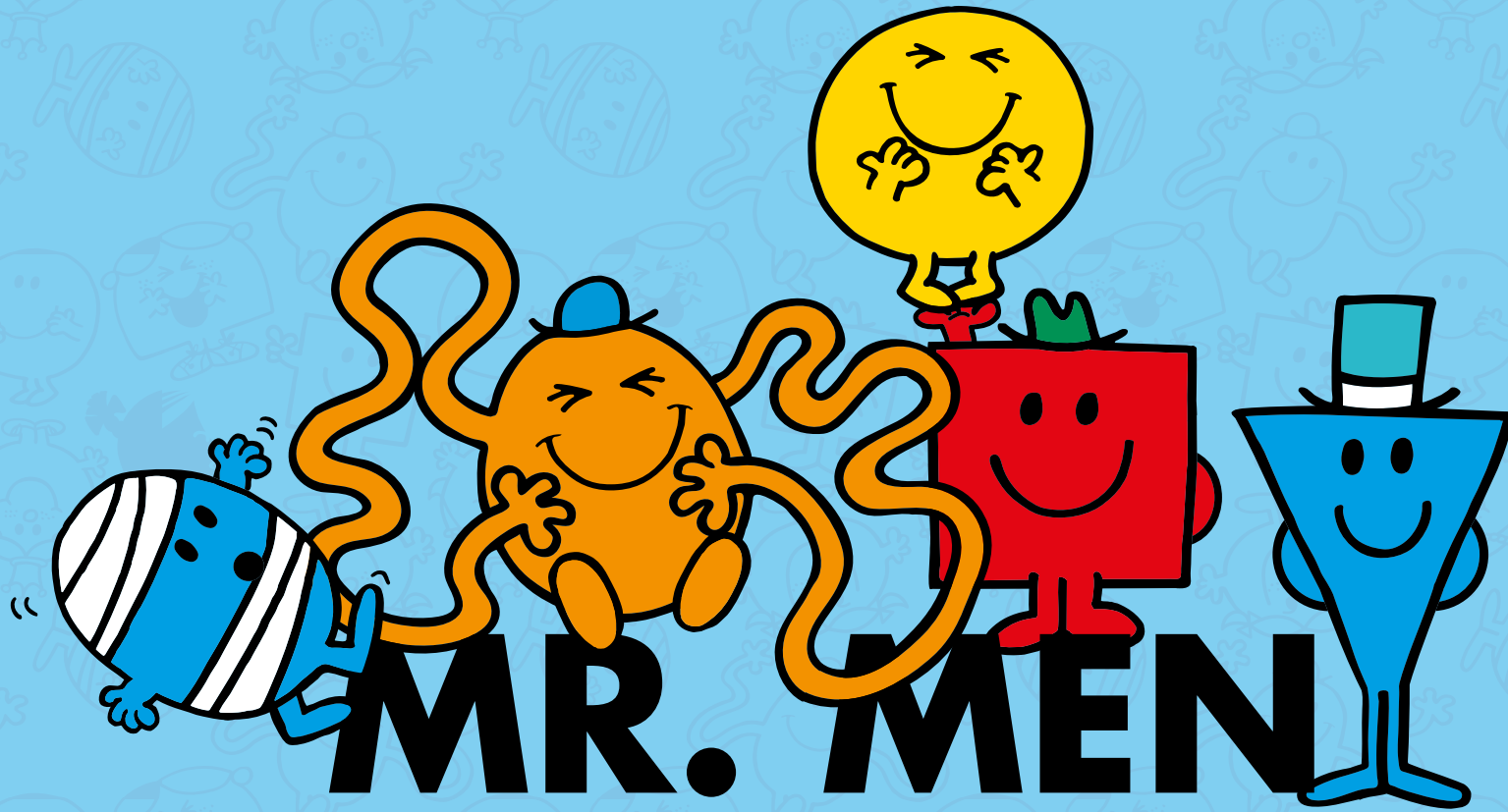
ABOUT THE BRAND

Mr. Men and Little Miss is a delightful eyewear collection for children. Infused with the essence of self-expression, simplicity, and humour, these frames are tailor-made for little ones.

Crafted with precision and understanding of children's facial parameters, this ten-piece collection ensures a perfect balance with adjustable properties, preventing slipping. The lens shape accommodates a child's regular upward gaze into an adult-designed world.

The collection consists of everyone's favourites including Little Miss Sunshine, Little Miss Chatterbox, Mr Tickle, the ever-joyful Mr Happy and more.





MEET THE MR. MEN CHARACTERS



MR BUMP 02

FRAME SIZE: 42-17-120

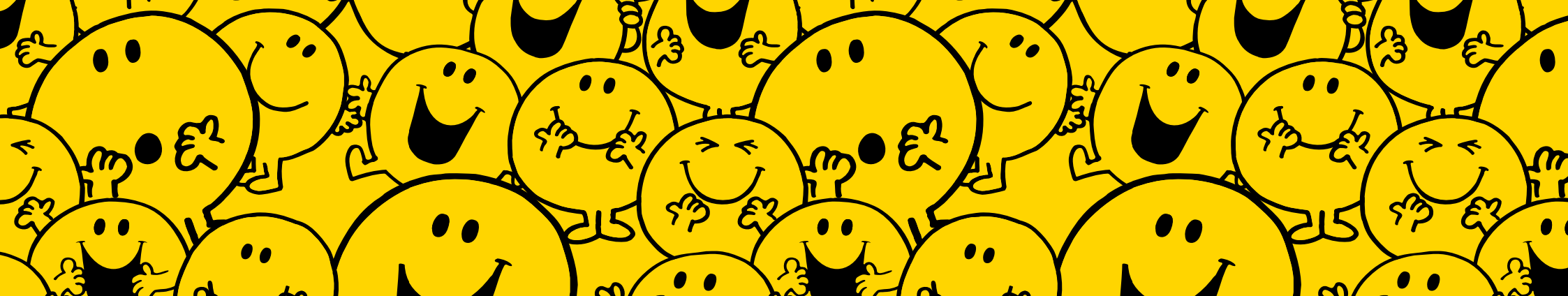
Mr Bump 02 is the perfect round eye.

C1 offers a striped blend of Grey and Blue, whilst C2 offers a two-tone Tort and Blue. The inside temples feature a Mr Bump pattern with a little character icon on the outside.



C1

C2



MR HAPPY 01

FRAME SIZE: 43-16-120

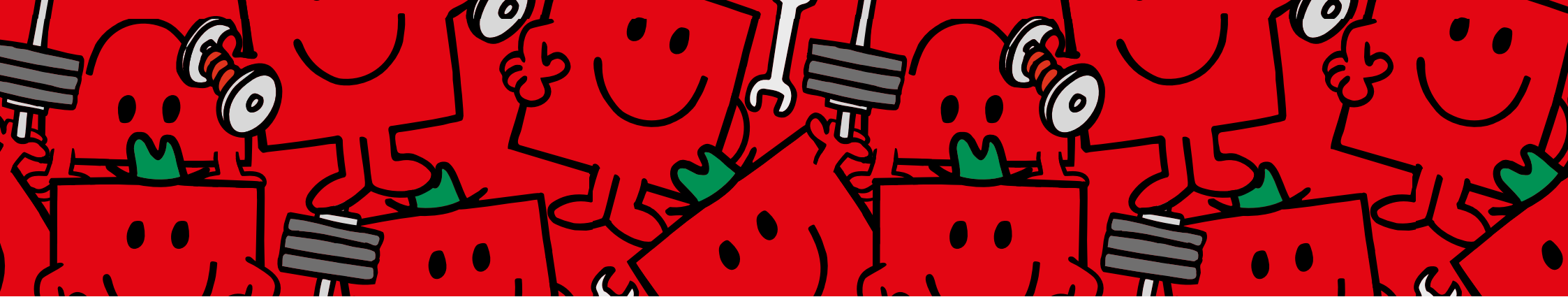
The iconic Mr Happy adorns the temples of this frame. Available in Red and Teal with an accent detailing in bright Yellow.

This frame is a simple and easy-to-wear choice for any little one!



C1

C2



MR STRONG 01

FRAME SIZE: 42-16-120

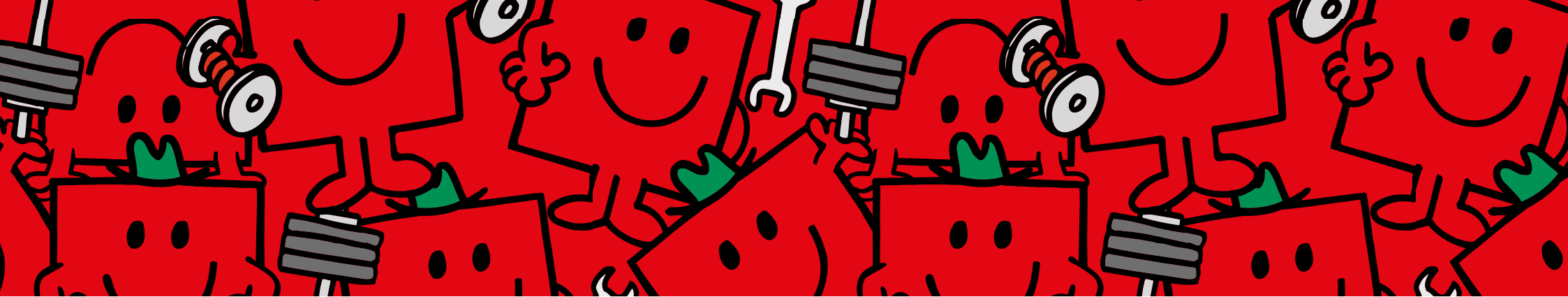
Mr Strong 01 is a vibrant bold frame, available in Green and Orange.

Mr Strong 01 is oval in shape. The temples on these fabulous frames feature Mr Strong across the length of them.



C1

C2



MR STRONG 03

FRAME SIZE: 43-17-120

Mr Strong 03 is a stunning metal round eye frame available in two captivating colours, Red and Brushed Gun. Mr Strong adorns the temples, and a series of drawn weights create a complementary design for the temple tips.

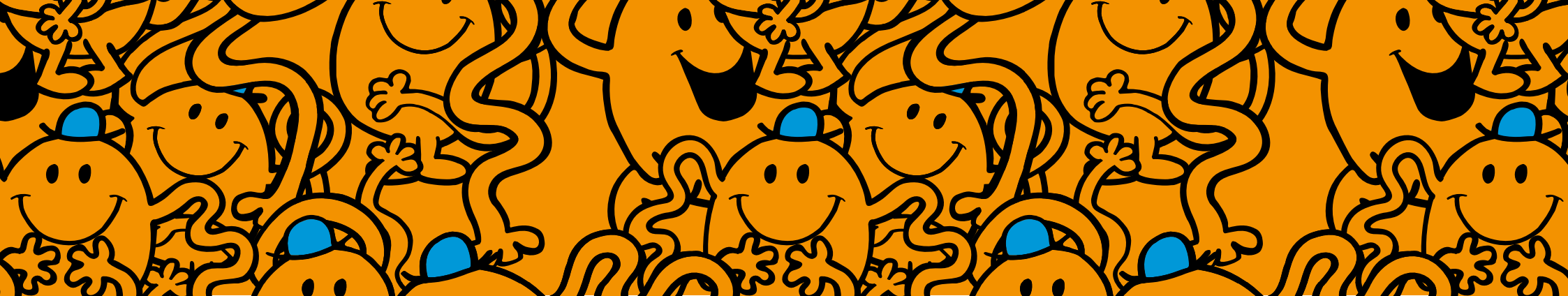


C1



C2





MRTICKLE01

FRAME SIZE: 43-16-120

These bright and bold rectangular frames are available in two striking colour choices, Blue and Orange. The chunky temples of these frames feature Mr Tickle adding a touch of whimsy and playfulness to the style.



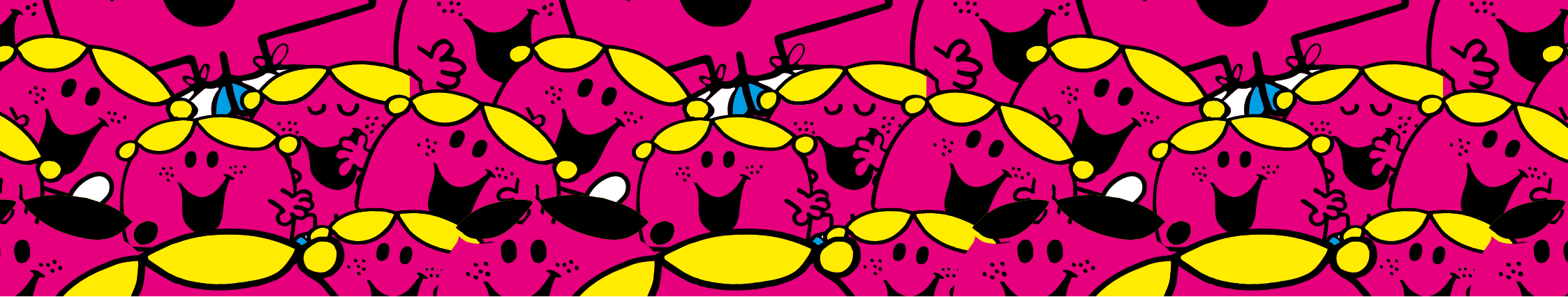
C1



C2



MEET THE LITTLE MISS CHARACTERS



LITTLE MISS CHATTERBOX 02

FRAME SIZE: 44-16-125

Named after the sweet Little Miss Chatterbox, these colourful and playful frames, add a splash of vibrant personality.

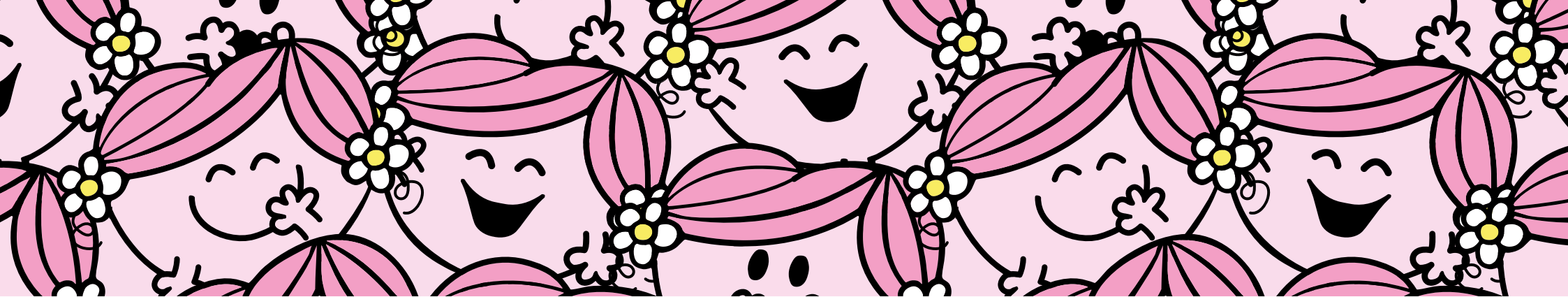
Available in two colourways: Pink and Purple, these frames have a metal temple, adorned with a Little Miss Chatterbox figure and matching temple tips.



C1



C2



LITTLE MISS HUG 01

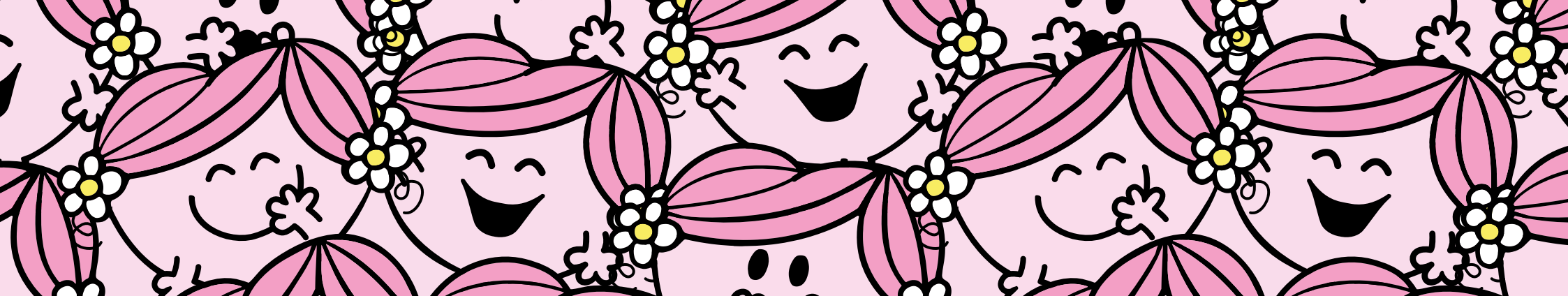
FRAME SIZE: 42-16-120

Little Miss Hug 01 infuses a hint of charm and sparkle. Sporting an elegant oval shape crafted from a blend of plastic and metal, its temples gracefully bear the endearing Little Miss Hug icon near the front, accentuated by patterned temple tips.



C1

C2



LITTLE MISS HUG 02

FRAME SIZE: 43-16-120

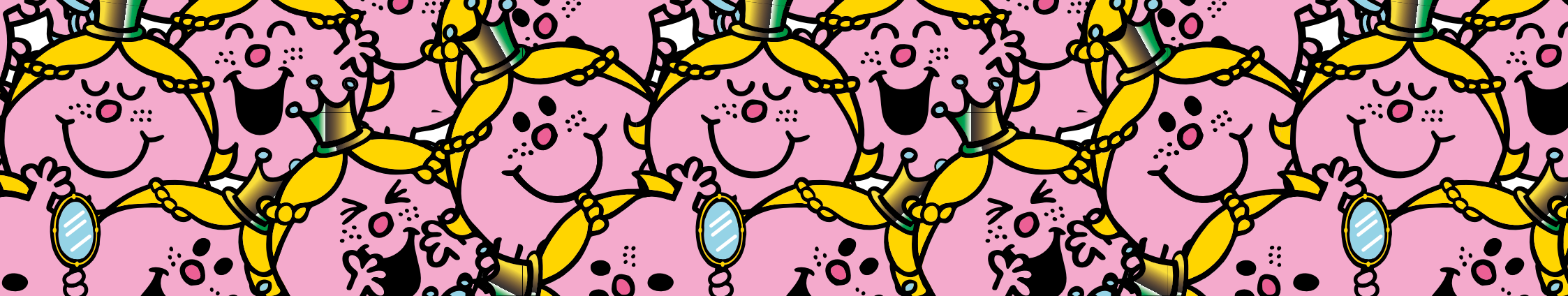
Little Miss Hug 02 is an oval frame with patterned temples. This is an easy-to-wear frame and offers a subtle choice for children to wear.

Little Miss Hug 02 is available in a delicate soft pink and lilac.



C1

C2

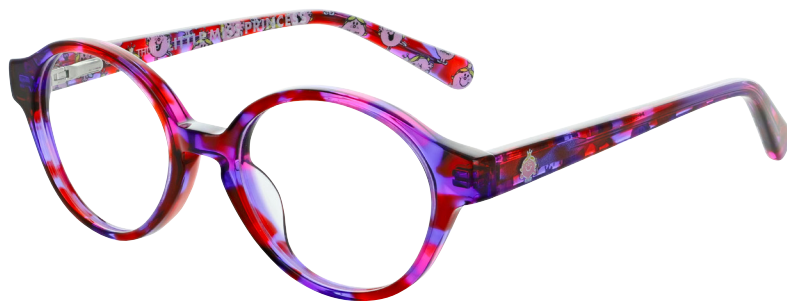


LITTLE MISS PRINCESS 02

FRAME SIZE: 43-16-120

An enchantingly vibrant option fit for royalty.

This rounded eye frame boasts a captivating multi-coloured speckle pattern, while the presence of Little Miss Princess on the temple adds a charmingly subtle touch.



C1

C2



LITTLE MISS SUNSHINE 02

FRAME SIZE: 42-17-120

Little Miss Sunshine lives up to her name with these bright metal frames. There is a cute Little Miss Sunshine on the temple and the tips feature a complementary Little Miss design.



C1

C2



continental
eyewear

PART OF MILLMEAD OPTICAL GROUP

MR. MEN™ LITTLE MISS™ © 2024 THOIP (a SANRIO Company). All rights reserved.