

REYKJAVIK EYES

At Reykjavik Eyes, we have redefined what eyewear can be -  
every season we are pushing the boundaries of  
style, colour, and design.

With our innovative approach, we are blending timeless  
elegance with bold, modern designs, creating frames that  
not only capture attention but inspire confidence.



REYKJAVIK EYES



NEW RELEASES





# BJORN

SIZE: 55-15-145

BJORN combines classic structure with subtle two-tone accents, inspired by Iceland's natural contrasts. Calm, balanced contours make it versatile for everyday wear.



BLACK



NAVY



GUN



KHAKI & GUN





# JOEL

SIZE: 55-17-145

JOEL is a geometric frame with precise proportions, reflecting the rugged lines of basalt cliffs. Its understated form offers modern clarity and simplicity.



BLACK



GUN & BRONZE



GUN & BLACK



KHAKI & GUN





# TIVA

SIZE: 52-21-145

TIVA's bold, square shape is softened by horizontal temple detailing. Modern tones evoke Icelandic landscapes, creating a versatile, contemporary frame.



BLACK



NAVY



KHAKI



BROWN





# UNA

SIZE: 50-20-140

UNA has a rounded profile and refined two-tone finish, offering a modern interpretation of a classic design. Clean lines give a quiet, confident presence.



VIOLET & PINK



PURPLE & BLACK



TEAL & BLUE





# FULL RIM COLLECTION





# ALIX

SIZE: 49-19-140

ALIX is soft square frame with subtle geometry, available in glacial blues and earthy lava tones that echo Iceland's dramatic contrasts.



BLACK



GUN



BLUE



ORANGE



REYKJAVIK EYES

ALLY features a curved rectangular front with upswept edges.

The two tone, hand-sprayed titanium adds a stylish finish to these models which combine Black, Red and Purple with Gold.



BLACK & GOLD



RED & GOLD



PURPLE & GOLD





# ALVAR

SIZE: 47-19-145

ALVAR is a contemporary frame with a modern angular shape.

With minimalistic design, and on trend colours, this is a highly wearable stylish frame.



**NEW** - NAVY & GUN



REYKJAVIK EYES

BLACK & GOLD



BRUSH GUN & BLUE



BRONZE & BLACK



# ARIA

SIZE: 51-17-140

ARIA is a contemporary take on the classic cat-eye shape.

With minimalistic design, on trend colours, this is a highly wearable frame.



BURGUNDY & LIGHT RED



BLACK & PINK



STONE & GOLD





# ASLA

SIZE: 53-17-145

Crafted from titanium, ASLA boasts durability without compromising on weight.

Embrace timeless sophistication with our contemporary soft square frame, blending retro charm seamlessly with a modern twist.



RED



AQUA



BLACK



GUN



# BEYLA

SIZE: 51-17-140

BEYLA is a petite rounded rectangular frame with striking colour combinations.

Pairing Turquoise with Red and Pink with Lilac.



PINK



BRUSHED TURQUOISE





# BRAGI

SIZE: 50-19-140

With the choice of three colourways, BRAGI is a simple yet striking round eye that offers something for everyone.

BRAGI is available Dark Gun and Gold.



DARK GUN



GOLD



# DELLING

SIZE: 52-16-135

A simple, but stylish frame, DELLING's use of contrasting colours add character and gives them a unique look.

DELLING is available in Dark Cherry, Blue and Pink.



DARK CHERRY



BLUE



PINK





# EDDA

SIZE: 52-17-140

EDDA embodies bold elegance with its oversized round design and subtle upswept corners.

The two-tone colour finish adds a striking visual contrast to this statement frame.



VIOLET



BLUE



TEAL



PURPLE



# ELIAS

SIZE: 49-20-145

ELIAS is an extremely smart piece of eyewear, that will be a refined choice for many.

Its spherical rims paired with its two-toned colourway, make it a frame that is not to be missed!



**NEW** - NAVY & GUN

RED & GUN



GUN & LIGHT TEAL



GUN & BRONZE



BLACK



NAVY & GUN



REYKJAVIK EYES



EIR plays with contrasting colours for a bold look.

The oval shape exudes style with a quirky twist. EIR is available in Purple and Pink.



PURPLE



PINK



ELSA is a petite and feminine model.

The subtle colourway of Red ensures that the frame is easy-to-wear and suits many face shapes.

RED





# EMILIA

SIZE: 53-17-140

EMILIA is a soft, feminine hexagonal design frame.

This frame blends lightweight elegance with a choice of four elegant colour options for a timeless, luxurious look.



ROSE GOLD & ROSE



GOLD & TEAL



ROSE GOLD



BURGUNDY



# FINN

SIZE: 56-16-145

FINN is an ultra-lightweight rectangular frame which blends minimalist Icelandic design with refined luxury for a modern, sophisticated look.

Available in three colours, there is an option for everyone.



BLACK & GREEN



GUN & BLUE



GREEN & GUN



# GUNNAR

SIZE: 54-20-145

The GUNNAR frame features a bold, masculine aviator design, combining sleek lines and lightweight comfort for a classic yet modern frame.

Available in Black & Orange, Navy & Gun, and Gun & Blue.



BLACK & ORANGE



NAVY & GUN



GUN & BLUE





# HANNA

SIZE: 51-18-140

HANNA is a bold geometric frame, its angular form reflects the strength of Iceland's terrains, bringing confidence and clarity to everyday wear.



BLUE



DARK CHERRY



TEAL



BLACK



REYKJAVIK EYES

# HANS

SIZE: 56-17-145

Discover HANS, where classic square frames meet a modern geometric edge, crafted from lightweight and durable titanium.

With two-tone options offering a unique point of differentiation, it's a fresh twist on a timeless design.



GUN & RED



DARK GUN & ORANGE



BLUE & GUN



KHAKI & GUN





# HARPA

SIZE: 49-20-140

HARPA embodies clean, architectural lines with a bold yet refined frame, perfect for those who want to make a statement with their eyewear.



VIOLET



BLUE



TEAL



DARK CHERRY





# HEIMDALL

SIZE: 54-17-140

HEIMDALL is a classic rectangular men's frame with contrasting bridge.

Available in three flattering colourways: Black & Gold and Gun.



BLACK & GOLD



GUN



# HELGA

SIZE: 52-16-140

HELGA is a delicate, feminine half-rim frame in an oval shape.

The vividly coloured rims and temples are a perfect collaboration, making for a fashion-forward piece for eyewear.



RED



TEAL



DARK VIOLET



# HEXTOR

SIZE: 57-18-150

HEXTOR is a rectangular frame with a striking front.

The use of titanium adds a stylish finish to this modern frame.



GUN & GREEN



BRIGHT BLUE & GUN



BRUSH BROWN & BLUE



GREEN & GUN





ISAK is a perfect round-eye that exudes timeless sophistication.

This classic design complements a variety of face shapes and adds an air of elegance to your look, whether you're dressing up for a special occasion or expressing your style in everyday wear.



PINK & GUN



BLACK & GOLD



BLUE & BRONZE



# JAKOB

SIZE: 47-21-145

The JAKOB frame is a versatile, unisex design featuring a bold, round shape with sleek metal rims, perfect for a modern yet sophisticated look.

Available in Navy & Red, Pink, Black & Gold, and Gun & Blue.



NAVY & RED



PINK



BLACK & GOLD

GUN & BLUE



# JESPER

SIZE: 47-22-145

This distinctively rounded yet angular frame bursts with retro vibes.

JESPER is available in Orange.

ORANGE





# JONAS

SIZE: 48-22-145

The round-eye style makes a comeback with JONAS frames, offering a modern take on a retro-classic look.

Crafted from durable and lightweight titanium, they come in four vibrant and classic colour options: Violet, Teal, Brown, and Navy.



VIOLET



TEAL



BROWN



NAVY



# KRISTIN

SIZE: 52-16-140

KRISTIN features a modern take on the square front.

An understated titanium trend piece for anyone looking for an updated look.



TEAL & RED



PURPLE & TEAL



BURGUNDY & LIGHT RED



# LARUS

SIZE: 52-21-145

LARUS is a square frame, making it an ideal choice for those who appreciate timeless elegance with a contemporary edge.

The square design provides a versatile look that complements a wide range of face shapes and personal styles.



DARK GUN & GOLD



TEAL BLUE & GUN



BRONZE & BLACK





# LOKI

SIZE: 53-18-140

A classic rectangular frame, LOKI features bright colours on the inside of the temples that contrast with the overall dark exterior of the frame.

Available in Gun & Blue.

GUN & BLUE



# LUKAS

SIZE: 53-17-145

LUKAS is a stylish square frame, featuring vivid colours on the inside of the temples.

This refined frame delivers a classy feel.



BRUSH GUN & RED



KHAKI & BLACK



NAVY & WHITE



BLACK



REYKJAVIK EYES

# MARIA

SIZE: 54-18-140

MARIA's front frame boasts a captivating two-tone hand sprayed colour finish that adds a burst of personality to your eyewear.

The oversized, angular silhouette adds an element of drama and flair to your look, making MARIA the perfect choice for those who dare to be different.

VIOLET & PINK



BLUE & TURQUOISE



NUDE & GOLD



**NEW** - BURGUNDY & TAUPE



# MIKAEL

SIZE: 49-21-145

MIKAEL is a modern square frame that channels the calm horizons of Iceland, crafted for lasting comfort and effortless style.



BLACK & GOLD



GUN



NAVY & GUN



KHAKI & GUN



REYKJAVIK EYES



# NEO

SIZE: 54-18-145

NEO is a classic men's supra frame available in three colours - Black, Brown and Blue.

C1 and C2 feature two tone detailing - a Brushed Gun bridge on the Black, and a Gold bridge on the Brushed Brown.

BLACK



BLUE



# ODIN

SIZE: 56-18-140

ODIN delivers a stand out frame that portrays a masculine edge.

This frame is bold in style and available in a range of easy-to-wear colours.



BLACK



BLUE



BRUSH GUN



OSKAR is a classic choice.

This lightweight titanium frame is rectangular in shape and comes in three easy to wear colour combinations - Gun & Orange, Black & Brown, and Blue & Gun.



GUN & ORANGE



BLACK & BROWN



BLUE & GUN



# RAGNAR

SIZE: 52-20-145

RAGNAR redefines bold style.

This oversized square frame commands attention and exudes confidence through its muted, masculine colours.



BLACK & GOLD



NAVY & WHITE



KHAKI & BLACK



GUN & GREEN



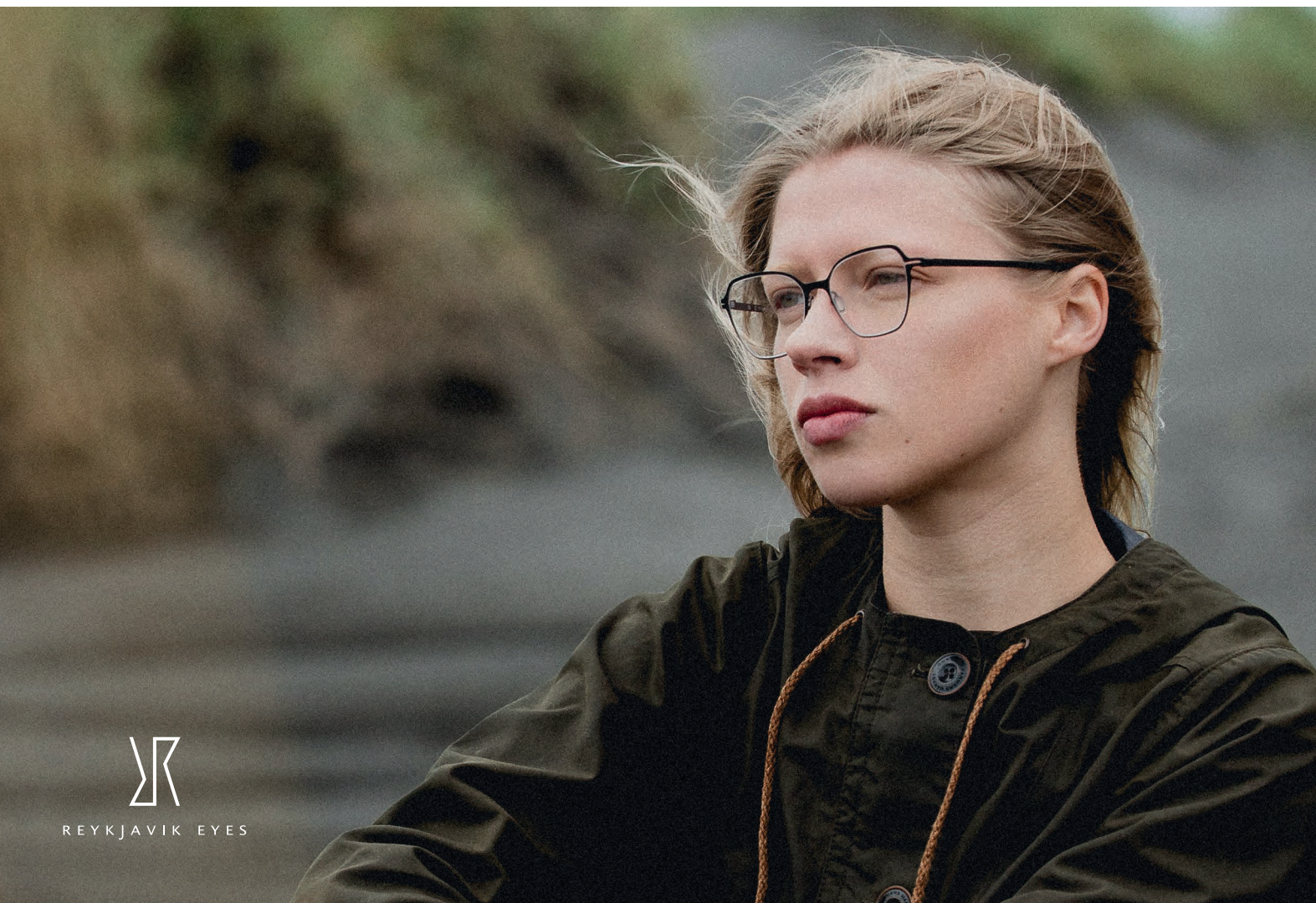
REYKJAVIK EYES



# RAKEL

SIZE: 50-17-140

RAKEL is a refined butterfly frame that echoes the sweeping lines of Iceland's landscapes, with colours that gently fade from one into another, reflecting the shifting tones of the island's horizons.



NAVY & PINK



BURGUNDY & RED



TEAL & PURPLE



BLACK & GUN



REYKJAVIK EYES

# RIKHARD

SIZE: 54-17-145

RIKHARD features a geometric square front with a double bar bridge along the brow line.

An understated titanium trend piece for anyone looking for an updated look.

GUN & LIGHT BLUE



# ROSBERG

SIZE: 51-17-145

ROSBERG is a larger take on the classic rectangular frame.

C1 features a new colour of hand-sprayed Gloss Black titanium, while C2 is a subtle Brushed Gun, and C3 is a bright and bold metallic Blue.



GLOSS BLACK



BRUSHED GUN



BLUE





# RUNAR

SIZE: 52-19-154

RUNAR offers timeless elegance with a contemporary twist, boasting a square frame ideal for versatile looks.

With durability and comfort in mind, choose from Navy, Gun, and Dark Gun colour options to suit your style.



NAVY



GUN



DARK GUN





# SARA

SIZE: 50-16-140

SARA is a frame that exudes femininity, with its oval shaped rims featuring a subtle cat-eye effect.

The frame is rounded off beautifully by the striking and memorable colour palette.



PINK



TEAL



Not your every day glasses, SIF is a rounded frame with angular edges.

The frame and temples feature a mix of contrasting colours, creating a unique look.



BLUE & WHITE



BLACK & PINK



PURPLE



# SKADI

SIZE: 47-22-145

A smaller take on the classic round-eye, SKADI is a contemporary frame that exudes old-style elegance.

This timeless model pairs well with any outfit choice and suits all ages.



BRUSHED GUN



BLACK & GOLD



BLUE & GUN



# SVEND

SIZE: 47-20-145

SVEND re-imagines vintage elegance with modern colours, offering a refined yet striking frame that feels both contemporary and enduring.



BLACK & GUN



NAVY & GOLD



GUN & BRONZE



KHAKI & BLACK





# THEO

SIZE: 55-18-145

THEO is half-rim frame in a rectangle shape, showcasing itself to be an ageless classic.

The frame is further enhanced by the inviting hues of the colouring, across the rims and temples.



BLUE



BLACK & BRONZE



VILI is a classic round eye frame suited to many face types.

Available in Brushed Gun with Orange inside temples.

BRUSHED GUN





# RIMLESS





# ALBA

SIZE: 54-15-145

ALBA is an aviator shaped rimless frame featuring a dramatic double bridge in three tonal colourways.

BLACK



BRUSHED BROWN





# ERON

SIZE: 54-17-145

ERON is classic in shape with subtle angular edges around the bridge.

This best-selling frame is available in five colourways to ensure there is something for everyone.



NAVY



LIGHT GUN



BLACK



GOLD



BLACK



REYKJAVIK EYES

# MARTA

SIZE: 51-15-145

MARTA is a smaller rimless choice with quirky, angular shaped lenses in a feminine range of colours.



BRUSHED PURPLE



BRUSHED TEAL



PINK



# TEKLA

SIZE: 50-17-145

TEKLA features rounded lenses with bright and bold inside temples.

The quirky bridge offers a distinctive look for all face shapes.



BLACK



BRUSHED GUN



BRUSHED BROWN







# GOLD EDITION

18K GOLD PLATED TITANIUM





HEKLA's dark grey, rectangular, polarised lenses offer both style and protection against the sun. The double bridge offers an unique and contemporary style.



# HENGILL

SIZE: 49-19-145

HENGILL is the only rimless frame in the Gold Edition collection. A bold and angular frame in 18k Gold plated titanium.



REYKJAVIK EYES

# KATLA

SIZE: 50-19-145

The KATLA sunglasses feature either a Dark Grey flash, Light Blue or Gold mirror lenses.

The thin gold plated titanium frames have a rounded bridge to complement the round eye fronts.



GOLD & GREY



GOLD & BLUE



GOLD



# KERID

SIZE: 52-18-140

KERID is a Gold, rectangular shaped frame with a distinctive angular design suits those looking for something striking but with a modest shape.







REYKJAVIK EYES

**CONTACT US**

83 Sefton Lane, Maghull, Liverpool, Merseyside, L31 8BU

United Kingdom

+44 (0) 151 526 2626

[info@reykjavikeyes.com](mailto:info@reykjavikeyes.com)



[www.reykjavikeyes.com](http://www.reykjavikeyes.com)